



2020

**YAKIMA®**

TAKE IT EASY





# What's Inside?

<b>ROOF RACKS</b>	<b>10</b>
Whispbar SmartFoot™	12
Bar Styles	13



<b>OFFROAD</b>	<b>14</b>
Crossbars	16
Platform	18
Accessories	20



<b>BIKE</b>	<b>22</b>
Hitch	24
Tow Ball	38
Top of Car	42
Boot/Hatch	48
Ute	52



<b>WATER</b>	<b>54</b>
Load Assist	56
Saddle and Roller	58
Cradle and Stacker	60
Surf and SUP	63
Fishing	65



<b>SNOW</b>	<b>66</b>
Ski and Snowboard	68



<b>CARGO</b>	<b>70</b>
Baskets	72
Roof Boxes	76



<b>BASE CAMP</b>	<b>80</b>
Rooftop Tents	82







**WE DON'T HAVE WILD SIDES,  
WE HAVE WILD SOULS.**

Our story is more of a journey, because we've never been good at sitting still. After all, we don't have wild sides; we have wild souls. For nearly four decades, our trusted solutions have transformed the way people travel. We're leaders in our category, packing heritage, safety, design sensibility, and street smarts into every product. Based in the Brisbane, we've got the great outdoors at our doorstep. From valleys and peaks to banks and backlands, the grounds we roam make us feel at home. Together with our network of respected retailers, we give everyone the the freedom to wander, the right to be unruly, and the confidence to go more rogue.

**YAKIMA®**  
**TAKE IT EASY.**



# FROM LOCAL RIVER RATS TO MAINSTREAM MOVERS AND SHAKERS

## CELEBRATING 40 YEARS OF TRANSFORMING THE WAY PEOPLE TRAVEL

An open road, any kind of gear, and unspoiled wilderness to explore. For 40 years, that's been Yakima's trusted way to Take It Easy™. We've always put our best outdoor selves into everything we make, pairing common sense with unlimited imagination...

**Our namesake** is a natural paradise in Washington State. And with good reason. We support adventures in the wild because they're good for the soul and easy on the Earth. If we've learned anything, it's that being fearlessly successful requires more than good intentions and a color catalog. We've never thought of our hardware as vehicle parts, but rather as seamless solutions for ideal outings that help people connect with nature.

As avid outdoor enthusiasts ourselves, we know first-hand why hitting the open road is great therapy. Even though making time for yourself isn't easy these days, our mission has never changed: to equip you with capable products for an easy transition from work to play, from stress to fun.

### A TRIPPY TREK IN TIME

Yakima Industries was launched in '74 by Nature-loving entrepreneurs who loved to tinker and invent. Otto and Jeanne Lagervall ran a humble machine shop in the majestic Yakima Valley.

Back then, people started realising they had easy access to national parks and outdoor adventures. But hauling cargo -

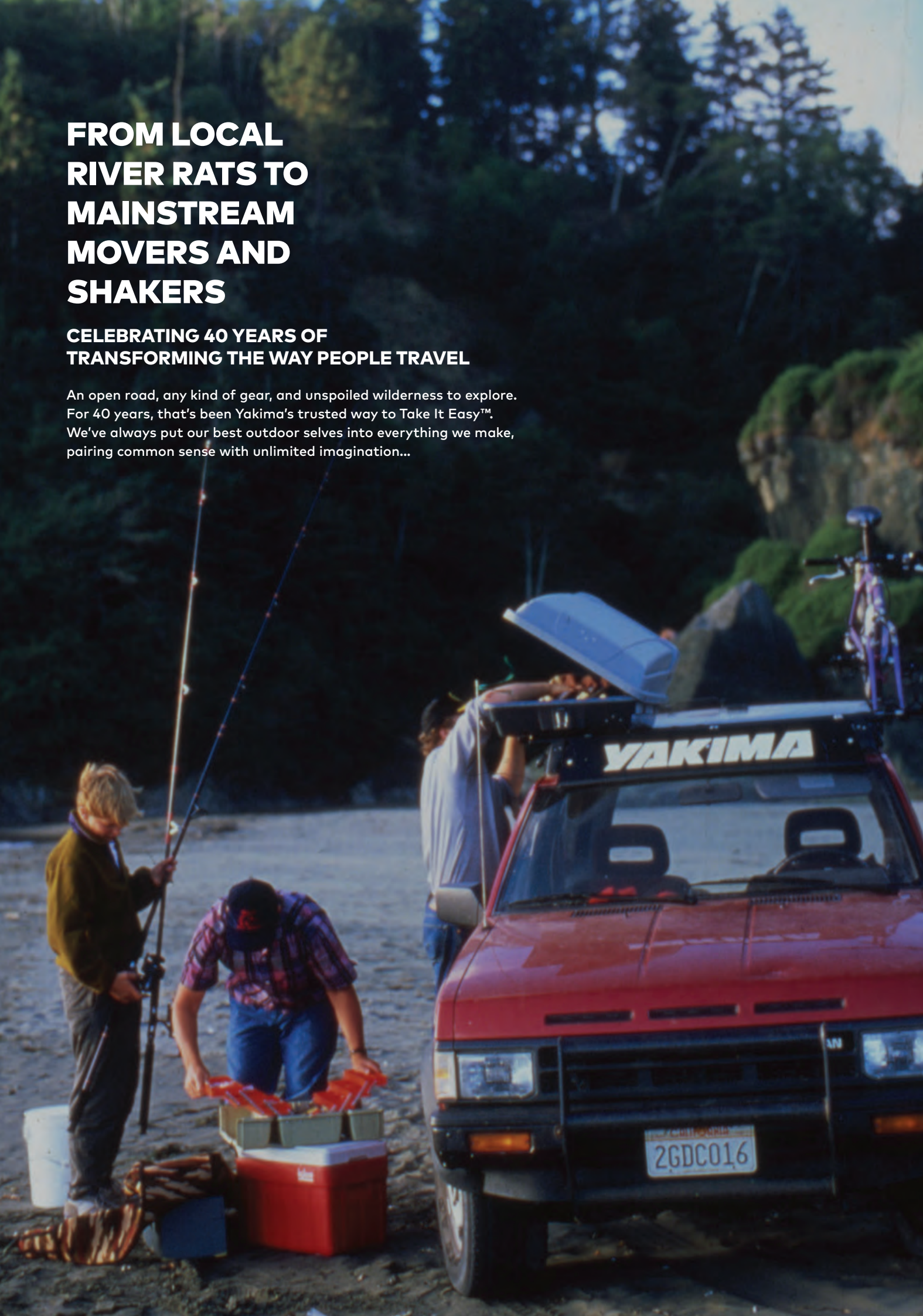
So Don and Steve decided to make racks that were beefy and over-engineered enough to take whatever the elements or traffic could dish out.

Around this time, outdoor sports and recreation boomed as riders and adventurers eagerly sought ways to take it easy. Being a serious mountain biker, Steve Cole knew people needed solutions to safely, smoothly transport their gear down just about any road.

These revolutionary designs put Yakima on the map at the 1984 Summer Olympics, where every participating vehicle was decked out with our racks. Soon Yakima became a global symbol for playing more and wrangling less. Our edge-of-the-seat passion for the widest skies and the wide-open road has never wavered.

### INDESTRUCTIBLE STANDARDS

Early on, we broke with existing American and European standards and traditions in rack design. We created hardware people had never seen... that worked in ways that hadn't occurred to them before... that would elevate roof racks and bike mounts and kayak saddles and all the rest to something that made people's recreational lives easier.



especially on the front and back seats, and through windows - at best was awkward, uncomfortable, and precarious.

Equipped with engineering backgrounds, Otto and Jeanne decided to build their own hassle-free rack for hauling the occasional canoe. Living by the credo, "Let us serve you with honesty, wisdom, and skill," they ended up building an industry.

### THE ROAD TO INNOVATION

Fast-forward to 1979. Our booming brand found its way into the hands of two outdoor enthusiasts who wanted to get their kayaks into the water. Don Banducci and Steve Cole soon relocated Yakima to the groovy town of Arcata on California's majestic North Coast. These game-changers were determined to take their own unwieldy gear farther.

However, when Yakima actively started developing the American rack industry in the late 1970s, there were no guidelines or standards.

In the lab and on the road, we still test relentlessly - refusing to take a "one-size-fits-all" approach. The limited lifetime-warranty-worthy products we engineer must make your vehicle expandable, not expendable.

### IT JUST GETS EASIER

A move to Portland, Oregon in 2005 brought us to a larger city with strong outdoor ties - and a multitude of new possibilities to serve our growing base of loyal customers who crave the Wild's challenging call.

2010 saw the launch of Yakima in the Australian and New Zealand markets. With the USA team still producing most of the cargo management products, Yakima Australia engineers the off-road products.

So here's to another 40 relentless years of expanding horizons and pushing personal boundaries. When it comes to just about any adventure, Yakima will keep on exploring better - and original—ways to let fellow adventurers like you Take It Easy™.





**TAKE MORE, DO MORE,  
ADVENTURE MORE.**



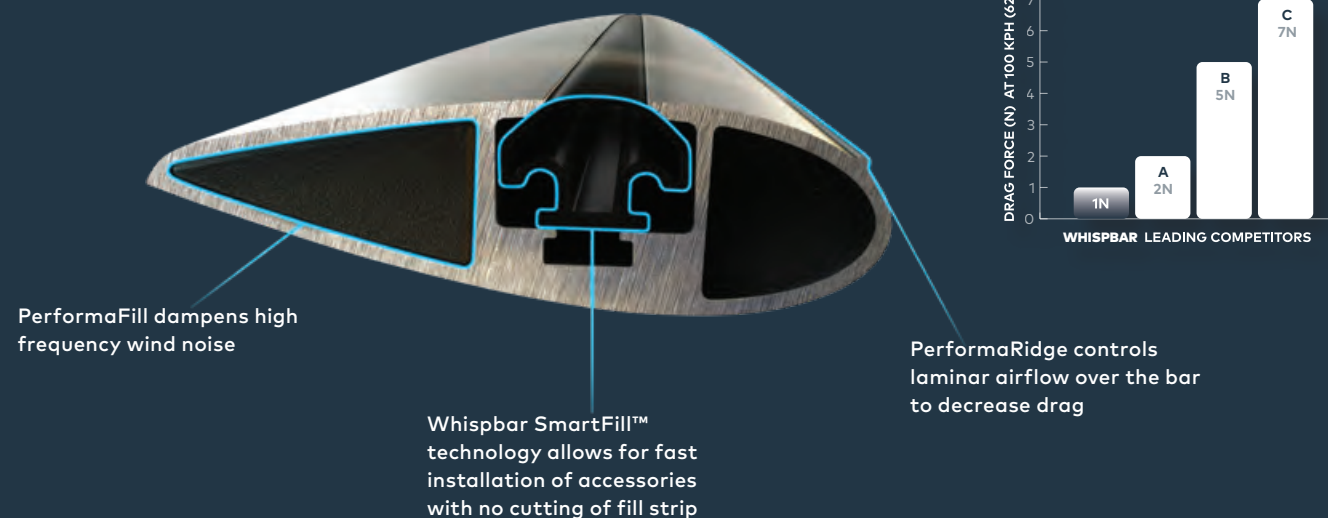
**ROOF RACKS**



# Whispbar™

QUIET, FUEL EFFICIENT, GOOD LOOKING

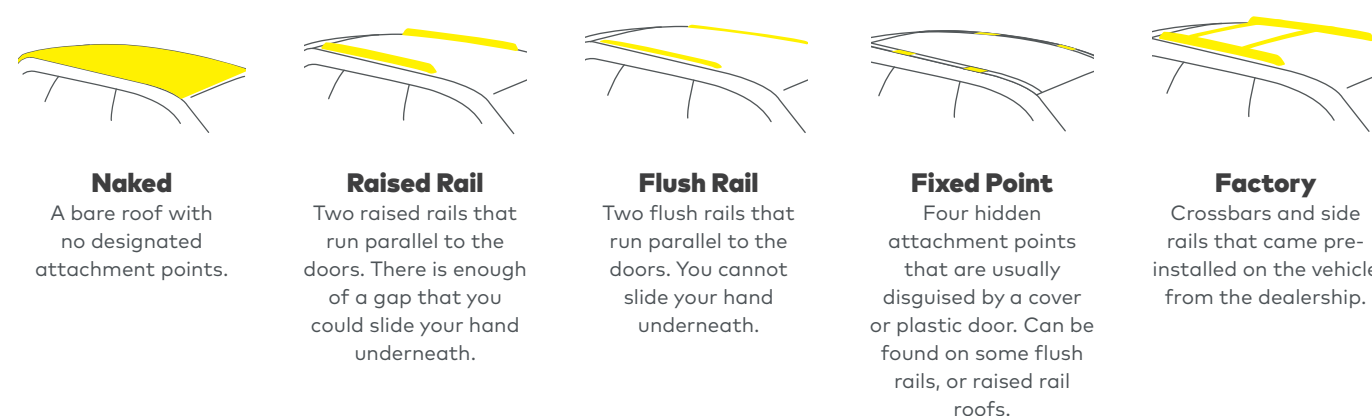
An innovative design that drastically reduces wind noise, drag and vibration. Not to mention improving fuel efficiency when on the road.



## Whispbar SmartFoot™

THE ULTIMATE RACK MOUNTING SYSTEM

Whispbar SmartFoot is a truly modular mounting system that seamlessly attaches to your vehicle like no other. Paired with these premium fitting kits, your rack system gets the custom treatment. Whispbar SmartFoot fitting kits are designed specifically for the make and model of your vehicle, ensuring a pure and secure fit.



## Throughbar™

FOR EXTRA CARRYING WIDTH

- Set of 2
- SKS locks included
- Available in silver or black
- T-Slot with Whispbar SmartFill
- Max. load rating 75 kg\*



## Flushbar™

FOR THAT PREMIUM FACTORY LOOK

- Set of 2
- SKS locks included
- Available in silver or black
- T-Slot with Whispbar SmartFill
- Max. load rating 75 kg\*



## Railbar™

A PREMIUM LOOK FOR VEHICLES WITH RAILS

- Set of 2
- SKS locks included
- Available in silver or black
- T-Slot with Whispbar SmartFill
- Max. load rating 75 kg\*



## HD Bar

TOUGH, QUIET, READY FOR HEAVIER LOADS

- Set of 2
- SKS locks included
- Our burliest crossbar ever, suitable for 100 kg loads\*
- Engineered aluminium construction provides superior support
- Comes with integrated tie-down points
- T-slot compatibility



\* Max. load rating is dependent on vehicle's roof and fit load restrictions

See the full range at [yakima.com.au](http://yakima.com.au) / [yakima.co.nz](http://yakima.co.nz)







**TOUGH RACKS  
DESIGNED FOR THE  
REAL OUTDOORS**



**OFFROAD**





## LockNLoad Crossbars™

HEAVY DUTY OFFROAD-RATED RACKS

Redefining what it means to handle rough conditions, the LockNLoad Crossbars have been designed from the ground up as THE ultimate 4x4, touring and commercial solution.



### End Caps

Integrated tie-down point rated to 100kg with obstruction-free loading and unloading, and integrated bottle opener.



### Open T-Slot Channel

Provides quick and easy installation of accessories with no rubber infill cutting required.



### Load Protector Strip

Reduces drag, prevents loads from shifting and provides maximum protection between the bar and load.

## LOCKNLOAD LEG PACKS

With a range of leg options to suit a wide variety of 4x4 vehicles, LockNLoad has a solution for your next adventure. Built tough and outback proven, all legs come with the added security of SKS locks as standard.



**Fixed Point and Trackmount Leg**



**Raised Rail Leg**  
(Platform only)



**Gutter Mount Leg**



**Flush Rail Mount Leg**





# LockNLoad Platform™

## TOUGH AND VERSATILE CARGO PLATFORM

Build out your vehicle to be a true adventure rig. Designed and tested in Australia for tough offroad conditions, and now with more sizes and fits than ever, this is the LockNLoad Platform.

- Corrosion resistant aluminium construction is powder-coated for durability and style
- Side-to-side slats act like crossbars for easy mounting of additional accessories or gear mounts
- Integrated wind deflector and push-down infill reduce wind noise

Find your vehicle fit at  
[yakima.com.au/vehicle-finder](http://yakima.com.au/vehicle-finder)  
[yakima.co.nz/vehicle-finder](http://yakima.co.nz/vehicle-finder)



FIXED POINT/TRACKS

RAISED RAIL

GUTTER MOUNT

FLUSH RAIL



PLATFORM	Width cm	Length cm	Size m <sup>2</sup>	Weight kg	No. of Slats latitudinal
A	123	153	1.9	21	7
B	137	153	2.1	23	7
C	137	193	2.7	30	9
D	142	213	3.0	32	10
E	123	213	2.6	29	10
F	157	80	1.1	12	3
G	157	140	2.2	24	6
H	157	213	3.3	36	10
I	165	140	2.3	25	6
J	165	193	3.1	34	9
K	123	140	1.7	19	6
L	137	140	1.9	21	6
N	137	213	2.9	32	10
P	130	193	2.5	28	9
U	148	213	3.2	35	10

### Custom Installs

We believe in getting your gear out of your vehicle so you can take more friends.

If you're looking to fit a canopy or a specific vehicle not listed in our Fit Finder, you may need to go the custom route. Visit our website for more information or to find an Authorised Dealer that does installations near you.

[yakima.com.au](http://yakima.com.au) | [yakima.co.nz](http://yakima.co.nz)



### Bold Looks

The LockNLoad Platform has a bold profile, suited to 4WD vehicles.

### Slats The Right Way!

Pack more gear and more accessories, thanks to the side-to-side slats and accessory slots in every slat and the outer frame.

### Pivot Mount System

Installation is made super easy by the self-levelling mounts which provide up to 10 degrees of movement.





# Offroad Accessories

LOAD MORE INTO EVERY ADVENTURE



## Eye Bolt Kit

Easily add a tie down point to your platform and most rack systems.  
8005022



## EasyOff

There's no quicker way to get your awning on and off your rack or platform.  
8007440



## AceO'Spades

Keep your shovel or long-handled gear within easy reach and secure when not in use.  
8000335



## LightenUp Light Bracket

Securely mount your light bar or spotlights on a LockNLoad Crossbar or Platform.  
8000336



## Bottle Opener

Use as a bottle opener, or string up a clothes line.  
8005035



## High Lift Jack Holder

Heavy duty welded steel construction with corrosion-resistant finish.  
8005033



## Corner Brackets

Set of four heavy duty brackets supplied with eye bolts for use with tie downs.  
8005036



## Gas Bottle Holder

Secure a 4 or 4.5 kg gas bottle to the LockNLoad Platform.  
8005034



## Load Holder

Use as a load stopper or tie down point on your LockNLoad Rack or Platform.  
8005025



## Load Roller

Protect your crossbar and make it easy to load/unload your gear.  
8005026



## Recessed Light Bracket

Mount your light bar neatly and discreetly below your LockNLoad Platform.  
8005037



## Accessory Brackets

Set of two versatile brackets (with fasteners) for mounting all kinds of accessories.  
8005028



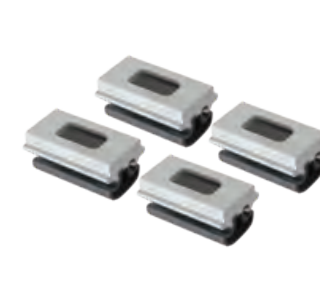
## Awning Brackets

A sturdy bracket for mounting an awning to crossbars or LockNLoad Platform.  
8005029



## Jerry Can Holder

Carry 10 and 20 litre jerry cans, secure and rattle-free on the LockNLoad Platform.  
8005038



## 21 mm Slot Adapter

Fit accessories such as bike and kayak carriers with a standard T-bolt.  
Set of 4 | 8005030



## Spare Wheel Restraint

Secure one spare tyre to your LockNLoad Platform.  
8005032



## SKS 9' Cable

Secure anything to your rack or platform with this 2.7 m cable (SKS Locks sold separately).  
8007233



## Aero Crossbar Pads

Protection for your bars or platform with a soft foam core and an anti-slip surface.  
50 cm | 8007412  
76 cm | 8007413



## SKS Locks

Security simplified. One key locks rack to vehicle and locks gear to rack.  
Set of 2 8007202  
Set of 4 8007204  
Set of 6 8007206  
Set of 8 8007208



## Windshield Fairing

An easy-to-attach fairing for platforms and crossbars that reduces wind noise and drag.  
86 cm (34") | 8005016  
102 cm (40") | 8005017  
117 cm (46") | 8005018  
132 cm (52") | 8005019



## Side Rails

Mount accessories directly to Side Rails or use as a tie-down point. Place on all sides of the Platform.  
Kit 1 (65 cm) 9801001 | Kit 2 (78 cm) 9801002  
Kit 3 (96 cm) 9801003 | Kit 4 (106 cm) 9801004  
Kit 5 (132 cm) 9801005 | Kit 6 (150 cm) 9801006



## RECREATIONAL ACCESSORIES

Innovative side-to-side slats act as crossbars to help you easily install most Yakima carriers. Bike, snow, water – wherever your passion lies, we want you to take it easy.







MOUNTING COMPONENTS



LockNLoad Crossbar  
Clamp Mount

A pair of heavy duty clamps to attach the LockNLoad Platform directly to a roof rack.  
8005039



Leg-to-Bar Height  
Packers

Additional clearance for your LockNLoad crossbar set up.  
10 mm 2-Pack | 8000357  
20 mm 4-Pack | 8000358  
30 mm 3-Pack | 8000359



Leg-to-Mount Height  
Packers

Add extra height to any LockNLoad system.  
7.5 mm 2-Pack | 8890337  
15 mm 4-Pack | 8890338  
22.5 mm 6-Pack | 8890339  
30 mm 8-Pack | 8890340



Universal Tracks

Use these universal track sets to mount a LockNLoad system to your canopy or hard lid.  
800 mm | 8000360  
1000 mm | 8000361  
1200 mm | 8000362  
1600 mm | 8000364



Custom Tracks

Vehicle specific track sets to mount LockNLoad system  
See website for vehicle fits:  
yakima.com.au  
yakima.co.nz



Universal Track Bolt Kit

LockNLoad universal track-to-leg mounting bolt kits  
M6 x 25 mm | 8880676  
M6 x 30 mm | 8880677  
M6 x 40 mm | 8880678  
M6 x 45 mm | 8880679  
M6 x 55 mm | 8880680



LockNLoad Accessory Compatibility

Part Number	ACCESSORY	LockNLoad Platform	LockNLoad Crossbars	Other Platform with Accessory Slot	Other HD Crossbars
8005022	EYE BOLT KIT	✓	✓	✓	✓
8005025	LOAD HOLDER	✓	✓	✓	✓
8005026	LOAD ROLLER	✓	✓	✓	✓
8005028	ACCESSORY BRACKETS	✓	✓	✓	✓
8005029	AWNING BRACKETS	✓	✓	✓	✓
8005030	21MM SLOT ADAPTER		✓		✓
8005031	RECOVERY TRACK HOLDER	✓	✓	✓	✓
8005032	SPARE WHEEL RESTRAINT	✓		✓	
8005033	HIGH LIFT JACK HOLDER	✓	✓	✓	✓
8005034	GAS BOTTLE HOLDER	✓		✓	
8005035	BOTTLE OPENER	✓			
8005036	CORNER BRACKETS	✓		✓	
8005037	RECESSED LIGHT BRACKET	✓	✓		
8000336	LIGHTENUP LIGHT BRACKET	✓	✓	✓	✓
8000335	ACEO' SPADES	✓	✓	✓	✓
8007440	EASYOFF AWNING BRACKET	✓	✓		✓
8005038	JERRY CAN HOLDER	✓		✓	
VARIOUS	AERO CROSSBAR PADS	✓	✓		✓
8007233	SKS CABLE	✓	✓	✓	✓
VARIOUS	WIND SHIELD FAIRING	✓	✓		✓

MEET YAKIMA  
OFFROAD  
AMBASSADOR  
Racins Adventures

Racin Jason used to race rally cars and now takes on a different type of track in his mighty Nissan Navara D23.

Exploring all that the beautiful Australian country has to offer, you can follow his adventures over on Instagram at @racins\_adventures



See the full range at yakima.com.au /yakima.co.nz



**ANY BIKE, ANY VEHICLE,  
ANY PLACE. WE GOT IT.**

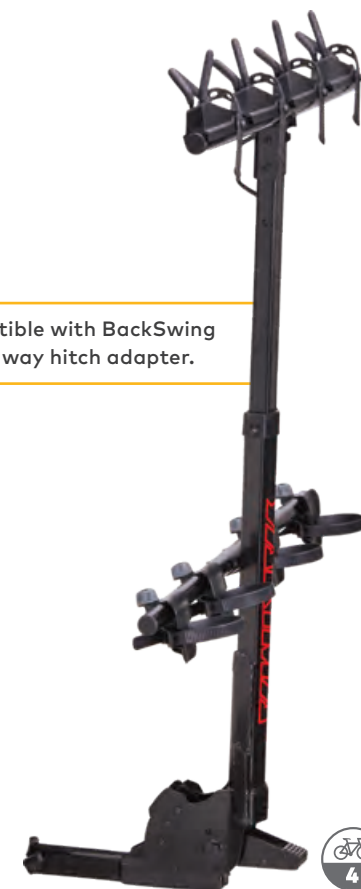


BIKE RACKS & MOUNTS





Compatible with BackSwing  
swing away hitch adapter.



**NEW!**

## HangOver™ VERTICAL HANGING MOUNTAIN BIKE RACK



Perfect for tour operators, group rides and big families. Constructed of heavy duty steel, our first ever vertical bike rack carries more bikes in less space, so you can safely haul up to six mountain bikes to the trailhead. We designed and tested it in the lab and on the road to meet our demanding Yakima standards. The easy-to-operate tilt mechanism with two adjustable mast angles keep your bikes from bumping into your car, ute or SUV and makes accessing the tailgate a breeze. Available in 4 or 6 bike options - get ready to session!

HANGOVER 4 | 8002484  
HANGOVER 6 | 8002485

Compatible Accessories:  
PlateMate | 8002700  
LightMate | 9802701  
BackSwing | 8002483 (HangOver 4 only)



Foot operated tilt mechanism  
changes rack position for easy  
loading and unloading.



Securely supports bikes by the  
fork crown; fits suspension fork  
bikes only.



Rotating wheel cup  
accommodates bikes with  
various wheelbases.



Add your own bike lock to the  
integrated lock loop for greater  
bike security.





## Dr.Tray™

### PREMIUM LIGHTWEIGHT TRAY HITCH BIKE RACK



Dr.Tray is the ultimate tray rack for your hitch. It can easily handle road, mountain, and fat-tyre bikes with up to 5" tyres. Bike clearance is top notch, with 46 cm between the trays. The bike tray spacing can be adjusted tool-free while the bikes are loaded, virtually eliminating any issues with bike-to-bike interference.

- Weighs in at only 15 kg – the lightest rack in its class
- StrongArm™ design secures bike at wheel, protecting paint and carbon frames
- Tilts down with bikes loaded for easy rear of vehicle access
- Accommodates 18 kg per tray

DR.TRAY | 8002473

Compatible Accessories:

PlateMate | 8002700

LightMate | 9802701

BackSwing | 8002483



Easy-to-use remote tilt lever for raising and lowering the rack.



Locking SpeedKnob™ provides easy, tool-free attachment and SKS Locks included to keep your mind at ease.



Tool-free QuickChange levers eliminate bike-to-bike contact.



Fits 26" to 29" wheels and tyres up to 5" wide.

## EZ+1

### DR.TRAY SINGLE BIKE ADD-ON



Easy to take on and off, the EZ+1 lets you add a friend's ride or travel solo with an expanded quiver. The elevated design helps maintain bike clearance on the same two-bike backbone, and an integrated SKS cable lock keeps your third bike secured.

EZ+1 | 8002475

Compatible Accessories:

PlateMate | 8002700

LightMate | 9802701







## HoldUp™ EVO

### PREMIUM TRAY HITCH BIKE RACK



The HoldUp EVO is built to handle new bike standards like fat tyres and boost hubs, but it easily carries the classics too. The StrongArm™ hook secures the bikes at their wheels, protecting carbon frames and painted surfaces. Tilt the rack with bikes loaded for quick rear-of-vehicle access. The super simple locking SpeedKnob™ makes install a tool-free breeze and included SKS locks keep your mind at ease.

- StrongArm™ hook secures bike at wheels, protecting painted surfaces and carbon frames
- Tilts down with bikes loaded for easy rear-of-vehicle access
- Fits 20" to 29" wheel sizes and tyres up to 4.8" wide, maximum wheelbase 48"
- Fits most bikes, including fat-tyre, mountain, road, hybrid, women's specific, BMX, kids' bikes, and e-bikes under 23 kg

HOLDUP EVO | 8002479

Compatible Accessories:

PlateMate | 8002700

LightMate | 9802701

BackSwing | 8002483



Fits road, mountain, fat tyre and kids' bikes.



Locking SpeedKnob™ provides easy, tool-free attachment.



Easy-access tilting lever.



Tilt down with KickStart™ foot pedal.



## EVO +2

### HOLDUP EVO HITCH BIKE RACK EXTENSION

Great for families, double dates, or bringing your entire bike quiver, the HoldUp EVO +2 turns the HoldUp EVO into a four-bike carrier.

HOLDUP EVO +2 | 8002482

Compatible Accessories:

PlateMate | 8002700

LightMate | 9802701







## SingleSpeed™

### SINGLE BIKE TRAY HITCH RACK

Fast, light, and great for solo travel, the SingleSpeed holds virtually any kind of bike tight and is super-easy to install and remove - great for spur-of-the-moment rides.

SINGLESPEED | 8002481

Compatible Accessories:  
PlateMate | 8002700  
LightMate | 9802701  
BackSwing | 8002483



- StrongArm™ design secures bike at wheels, protecting paint and carbon frames
- Accommodates disc brakes, through axles, boost hubs, and full suspensions
- Weighs in at just 9.1 kg



Integrated lock secures bike to the rack.



Locking SpeedKnob™ provides easy, tool-free attachment.



## HoldUp™

### TRAY HITCH BIKE RACK



The HoldUp is Yakima's fastest, easiest way to load bikes. Its beefed-up arm pivot makes it stronger than ever and the side-to-side adjustability reduces the chance for bike-to-bike interference. It's a road trip companion for life.

HOLDUP | 8002443

Compatible Accessories:  
PlateMate | 8002700  
LightMate | 9802701  
BackSwing | 8002483



Integrated lock secures bike to the rack.



Adjustable trays.



## HOLDUP +2

### HOLDUP HITCH BIKE RACK EXTENSION

Doubles your HoldUp bike hitch carrier's capacity from 2 to 4 bikes.

8002446





## FourTimer™ TRAY HITCH BIKE RACK



FourTimer is the ideal hitch rack for up to four bikes of all shapes and sizes. Perfect for fat bikes, bikes with fenders and women's specific bikes. Converts to a 2-bike rack in minutes.

FOURTIMER | 8002469

Compatible Accessories:  
Fat bikes require Fat Strap | 8002470  
PlateMate | 8002700  
LightMate | 9802701  
BackSwing | 8002483



## TwoTimer™ TRAY HITCH BIKE RACK



Transport two bikes regardless of frame design, suspension or wheel size. Perfect for fat bikes, bikes with fenders and women's specific bikes.

TWOTIMER | 8002468

Compatible Accessories:  
Fat bikes require Fat Strap | 8002470  
PlateMate | 8002700  
LightMate | 9802701  
BackSwing | 8002483



## StickUp™ TRAY HITCH BIKE RACK



This affordable tray-style 2-bike hitch carrier offers good looks, easy loading and more bang for the buck than a crate of discount dynamite.

STICKUP | 8002420

Compatible Accessories:  
PlateMate | 8002700  
LightMate | 9802701  
BackSwing | 8002483



## FullSwing™ PREMIUM SWING-AWAY HITCH BIKE RACK



The FullSwing™ has all the bells and whistles, from new ZipStrips™ to fully padded arms. It also swings away with one touch, for easy access to your car whenever you need.

FULLSWING | 8002465

Compatible Accessories:  
TubeTop | 8002531  
PlateMate | 8002700  
LightMate | 9802701



ZipStrip cradles secure bikes in place and prevent swinging.



Easy hitch install with tool-free locking SpeedKnob™.



Locks bikes to rack with integrated bike lock.



Tilting lever allows the arms to fold flat when not in use.





## FullTilt™

### PREMIUM SWING-AWAY HITCH RACK



Fully assembled out of the box. Installation is a breeze with the new AutoPin and locking SpeedKnob. Plus, new ZipStrips make loading and securing bikes simpler than ever. Need to access your vehicle? Simply tilt down with the conveniently located UpperHand lever.

FULLTILT 4 | 8002462  
FULLTILT 5 | 8002463

Compatible Accessories:  
TubeTop | 8002531  
PlateMate | 8002700  
LightMate | 9802701



Arms fold flat when not in use.



Easy hitch install with tool-free locking SpeedKnob™.



Tilts for easy access to the boot.



Adjustable ZipStrip cradles allow for the perfect fit between bikes.



## LiteRider™ 3

### PREMIUM LIGHTWEIGHT HITCH RACK



Light, strong and secure, the LiteRider aluminium hitch rack offers more cushion in the cradles, more zip in the strip, and an integrated lockable security cable to ensure that both bikes and riders can relax on the road.

LITERIDER 3 | 8002471

Compatible Accessories:  
TubeTop | 8002531  
PlateMate | 8002700  
LightMate | 9802701



Tilts for easy access to the boot.



Easy install with tool-free locking SpeedKnob™.



Arms fold flat when not in use.



ZipStrip cradles secure bikes in place and prevent swinging.



## LongHaul™

### PREMIUM RV-APPROVED HITCH BIKE RACK



Built for rugged long-distance RV travel, the LongHaul securely carries four bikes, is easy to use, and is a breeze to install and remove. Packed with features, the RoadTrip goes above and beyond. The arms fold flat when not in use, the built-in lock secures bikes, and the padded cradles with ZipStrips hold bikes in place. It even features a handy bottle opener.

LONGHAUL | 8002476

Compatible Accessories:  
TubeTop | 8002531  
PlateMate | 8002700  
LightMate | 9802701  
BackSwing | 8002483



Locks bikes to rack with integrated bike lock.



Easy install with tool-free locking SpeedKnob™.



Arms fold flat when not in use.



ZipStrip cradles secure bikes in place and prevent swinging.



## BackSwing™

### HITCH RACK SWING ADAPTER

Now you can rack up the bikes and still access your tailgate. The BackSwing™ hitch adapter turns your hitch product into an easy-to-use swing-away rack that locks up tight while you're on the road. It works seamlessly with most 50 mm (2") bike racks, like the HoldUp – as well as almost any other rack using a 50 mm (2") receiver – to let you swing your fully loaded rack out of the way so you can easily get to your gear.

BACKSWING | 8002483







# DoubleDown™ 4

HITCH BIKE RACK



You'll never find a better hitch-style bike carrier for the price than the affordable DoubleDown 4. It not only carries up to four bikes to exciting locations, it tilts conveniently out of the way when not in use for rear of vehicle access.

- DOUBLEDOWN | 8002424
- Compatible Accessories:  
HitchLock | 8007235  
DeadLock | 8002411  
TubeTop | 8002531  
PlateMate | 8002700  
LightMate | 9802701



# DoubleDown™ Ace

HITCH BIKE RACK



Yakima is upping the ante with our DoubleDown Ace. We've stacked the deck with great features like tool-free installation, integrated hitch lock and a new paint job.

- DOUBLEDOWN ACE 4 | 8002451  
DOUBLEDOWN ACE 5 | 8002452
- Compatible Accessories:  
TubeTop | 8002531  
PlateMate | 8002700  
LightMate | 9802701



## HITCH BIKE RACK ACCESSORIES



**TubeTop™**  
Create a faux-top-tube so your bike mounts solidly to the rack.  
8002531



**PlateMate™**  
Hold your accessory number plate safely on the back of your bike rack.  
8002700



**LightMate™**  
Where a bike carrier hides both number plate and rear lights, LightMate has it covered.  
9802701

## Yakima Hitch Racks Compared

RACKS	MAX. NO. OF BIKES	MAX. WEIGHT PER BIKE*	MAX. TOTAL WEIGHT	ZERO FRAME CONTACT	HAS SKS HITCH LOCK	HAS SKS BIKE LOCK	REAR ACCESS WHILST LOADED	SUITABLE FOR FAT BIKES (WITH FAT STRAPS)
HangOver	4/6	17 kg	***		✓		✓	✓
Dr.Tray	2/3**	18 kg	36 kg	✓	✓	✓	✓	✓
HoldUp EVO	2/4**	23 kg	***	✓	✓	✓	✓	✓
HoldUp	2/4**	27 kg	***	✓	✓	✓	✓	
SingleSpeed	1	18 kg	18 kg	✓		✓		✓
FourTimer	4	20 kg	81 kg		✓		✓	✓
TwoTimer	2	20 kg	41 kg				✓	✓
StickUp	2	20 kg	41 kg					✓
DoubleDown 4	4		54 kg				✓	
DoubleDown Ace	4/5	18 kg	54/57 kg				✓	
FullSwing	4	18 kg	68 kg		✓	✓	✓	
FullTilt	4/5	18 kg	68 kg		✓	✓	✓	
LiteRider 3	3	20 kg	41 kg			✓	✓	
LongHaul	4	17 kg	68 kg		✓	✓		

\* Combined weight of bikes should not exceed the rack's maximum total weight capacity. Please refer to website for full specifications.

\*\* With bike rack extension sold separately.

\*\*\* Be sure to check your vehicle's tongue weight rating.



**Fat Straps**  
Carry oversized (fat) tyre bikes on bike racks. 39 cm x2.  
8002470



**HitchLock™**  
Lock your Yakima hitch rack to your hitch receiver to keep your bikes and rack safe.  
8007235



**ArmLock™**  
Integrated cable locks your bikes to a mast-style hitch mount.  
8002453



**SKS 9' Locking Cable**  
Secure anything to your rack. SKS Lock Cores sold separately.  
8007233



**SKS Locks**  
Security simplified. One key locks rack to vehicle and locks gear to rack.  
Set of 2 8007202 | Set of 4 8007204  
Set of 6 8007206 | Set of 8 8007208



**Carbon Rim Protector**  
Cushion the strap of your bike rack around carbon rims, 2pk.  
9802001





## JustClick™

### CLICK AND GO TOW BALL BIKE RACK



With space for two or three bikes and the ability to add one more, this tow ball carrier is a technical marvel for all cyclists. The simple "Just Click" system makes it easy and secure to mount to your vehicle's tow ball. Created with the future in mind, it is capable of carrying e-bikes.

- Extendable wheel tray to suit most frame sizes
- Convenient tilting system allow for access to rear of vehicle

JUSTCLICK 2 | 8002493

JUSTCLICK 3 | 8002494

Compatible Accessories:

Carbon Rim Protectors | 9802001



Green indicator light confirms when the carrier is properly mounted.



One key secures your bikes to the carrier, and the carrier to your vehicle.



Frame grab secures bike frame and prevents movement of mounted bikes.



Wheel ratchet secures bike wheels to the tray.



## JustClick™ +1

### JUSTCLICK BIKE RACK EXTENSION

Add an additional one bike carrying capacity. Attaches securely to the back of the JustClick 2 or JustClick 3.

JUSTCLICK +1 | 8002488

Compatible Accessories:

Carbon Rim Protectors | 9802001







## FoldClick™ SUPER COMPACT TOW BALL BIKE RACK



With two or three-bike carrying capacity, this tow ball carrier is a technical marvel for all cyclists. The simple "Just Click" system makes it easy and secure to mount to your vehicle's tow ball. Its trump card is the ability to fold down to occupy a very small space, so that you can just leave it in your boot for when you need it.

- Profiled wheel trays for road, cruiser and MTB tyres up to 83 mm (3.25")
- Wheel tray folds down for storage
- Convenient tilting system for access to rear of vehicle

FOLDCLICK 2 | 8002495  
FOLDCLICK 3 | 8002496

Compatible Accessories:  
Carbon Rim Protectors | 9802001



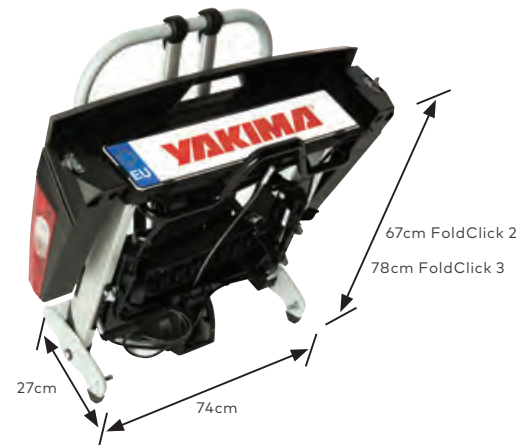
### FOLDCLICK AND JUSTCLICK ACCESSORIES



**Long Wheel Strap Kit**  
100mm longer wheel strap set for fat bikes, e-bikes, etc.  
9802702



**460mm Bike To Hoop Arm**  
Carry a bike in the third position on FoldClick 3 and connect it directly to the hoop.  
CK698



**ClickHook**  
The wall hook saves space when storing your carrier.  
8002497



**ClickCover**  
Keeps your bike carrier free from dust.  
8002498



**ClickRamp**  
Convenient loading ramp for electric bikes.  
8002492



**ClickTop**  
Allows bikes without horizontal top tubes to be carried.  
8002499

## Yakima Tow Ball Racks Compared

BIKE MOUNTS	JustClick 2	JustClick 3	FoldClick 2	FoldClick 3
BIKE CAPACITY	2/3**	3/4**	2	3
E-BIKE COMPATIBLE	✓	✓	✓	✓
TILTS WITH BIKES LOADED	✓	✓	✓	✓
FOLDS FOR EASY STORAGE	✓	✓	✓	✓
SPACING BETWEEN BIKES	25 cm	20 cm	22 cm	19 cm
LOCKS BIKE TO CARRIER	✓	✓	✓	✓
LOCKS TO VEHICLE	✓	✓	✓	✓
TOOL-FREE INSTALLATION	✓	✓	✓	✓
7 PIN PLUG INCLUDED	✓	✓	✓	✓
PRODUCT WEIGHT	17.3 kg	20.3 kg	14.5 kg	16.5 kg
JUSTCLICK +1 OPTION	✓	✓		
WHEELS FOR EASY TRANSPORTING	✓	✓		
ON-BOARD STORAGE OF CLICKRAMP	✓	✓		
ELEVATED REAR TRAY	✓	✓		
MAX. WEIGHT PER BIKE*	30 kg	30 kg	30 kg	30 kg
MAX. TOTAL WEIGHT	60 kg	60 kg	60 kg	60 kg

\* Combined weight of bikes should not exceed the rack's maximum total weight capacity. Please refer to website for full specifications.

\*\* With bike rack extension sold separately.

See the full range at [yakima.com.au](http://yakima.com.au) / [yakima.co.nz](http://yakima.co.nz)







## HighRoad™

### PREMIUM ROOFTOP UPRIGHT BIKE MOUNT



Secure, sleek, and simple to use, the HighRoad secures the bike by the wheels for ultimate frame protection. The adjustment-free hoop with its TorqueRight™ tightening knob loads a variety of bikes quickly and easily. Low-profile design minimises hatch interference. Universal mounting hardware fits most roof racks.

HIGHROAD | 8002114

Compatible Accessories:  
Set of 2 SKS Locks | 8007202  
SmarT-Slot 1 for T-Slot Mounting | 8002122  
Carbon Rim Protectors | 9802001



Upright wheel hoops safely secure the front wheel. Adjustment free for most wheel sizes.



Just turn the TorqueRight™ knob until it clicks to secure the wheel in the hoop.



Built-in TailWhip™ retractable locking cable (add SKS Locks sold separately).



Folds flat and streamlined when not in use.



## HighSpeed™

### PREMIUM ROOFTOP FORK BIKE MOUNT



Our premium fork mount, the low-profile HighSpeed, is streamlined, strong and versatile. It easily transports mountain, road, and fat-tyre bikes and fits both quick release and through axles. Bikes are secured using the easy-to-use TorqueRight™ knob for a precise and strong hold.

HIGHSPEED | 8002115

Compatible Accessories:  
Set of 4 SKS Locks | 8007204  
SmarT-Slot 1 for T-Slot Mounting | 8002122  
Carbon Rim Protectors | 9802001



Easily clamps onto axle, safely and securely.



TorqueRight™ knob quickly and easily secures the bike axle with precision.



Securely carries a variety of bikes including road, mountain and up to 5" fat-tyre bikes.



Built-in TailWhip™ retractable locking cable (add SKS Locks sold separately).





## FrontLoader™

### ROOFTOP UPRIGHT BIKE MOUNT



Our most versatile bike mount. It carries your complete bike, no wheel removal needed. The universal mounting system fits nearly any crossbars you can think of.

FRONTLOADER | 8002103  
Compatible Accessories:  
Set of 2 SKS Locks | 8007202  
Carbon Rim Protectors | 9802001



Locking cable for security (SKS lock sold separately).



Easy to adjust spinning knob tightens the wheel.



Sliding wheel tray for range of bike lengths.



\*Fits 20" to 29" wheels with tyre widths up to 3".

*\*Some exceptions apply, visit your local dealer for your specific fit/bike needs.*



## ForkLift™

### ROOFTOP FORK BIKE MOUNT



The fork-style roof rack bike mount fits nearly every crossbar right out of the box - no tools necessary. It keeps your bike pristine, not touching any painted surface.

FORKLIFT | 8002098  
Compatible Accessories:  
Set of 2 SKS Locks | 8007202  
Carbon Rim Protectors | 9802001



Sliding wheel tray fits a wide range of bike lengths



Integrated locking system



Sleek, low profile



## ForkChop™

### MINIMALIST ROOFTOP FORK BIKE MOUNT



ForkChop transports virtually any bike, including both quick release and through axles, and does it all without touching the bike frame. The split design makes it ideal for use with a cargo basket or for a minimalist look on your vehicle's roof rack.

FORKCHOP | 8002117  
Compatible Accessories:  
Set of 2 SKS Locks | 8007202  
Carbon Rim Protectors | 9802001



Fits multiple tyre sizes from road to fat bikes.



Comes equipped to fit multiple through axles and quick release bikes.



See the full range at [yakima.com.au](http://yakima.com.au) / [yakima.co.nz](http://yakima.co.nz)



ROOFTOP BIKE RACK ACCESSORIES



**WheelHouse**  
Single wheel rooftop mount for most new bike axle standards.  
8002108



**Through Axle Adapter**  
Works with WheelHouse to hold wheels with 15 mm thru-axle.  
8002110



**Carbon Rim Protector**  
Cushion the strap of your bike rack around carbon rims, 2pk.  
9802001



**Fork Adapter**  
Put your thru axle fork on any fork-mounted bike rack.  
12 mm x 100 mm 8002116  
15 mm x 100 mm 8002099  
15 mm x 110 mm 8002113



**SKS 9' Locking Cable**  
Secure anything to your rack. SKS Lock Cores sold separately.  
8007233



**Fat Bike QR Locking Skewer**  
For Fat Bikes with 9 mm x 135 mm axles.  
8002120



**Smart Slot Kit 1**  
Enable attachment of your bike mount into a T-slot channel on your crossbar.  
8002122



**Fat Straps**  
Carry over sized (fat) tyre bikes on bike racks. 39 cm x2.  
8002470



**SKS Locks**  
Additional lock cores to secure more gear.  
Set of 2 8007202  
Set of 4 8007204  
Set of 6 8007206  
Set of 8 8007208



Yakima Top-of-Car Racks Compared

BIKE MOUNTS	HighRoad	HighSpeed	FrontLoader	ForkLift	ForkChop
TOOL-FREE INSTALLATION	✓	✓	✓	✓	✓
COMPATIBLE WITH SKS LOCKS	✓	✓	✓	✓	✓
ZERO CONTACT WITH BIKE FRAME	✓	✓	✓	✓	✓
FULLY ASSEMBLED	✓	✓	✓	✓	✓
MAX. WEIGHT PER BIKE	20 kg	20 kg	18 kg	15 kg	18 kg
FITS FAT BIKES		✓			✓
T-SLOT COMPATIBLE	✓ (SMART-SLOT KIT 1)	✓ (SMART-SLOT KIT 1)			
CROSSBAR COMPATIBILITY	●■—	●■—	●■—*	●■—*	●■—*

●■— RoundBar | Square Bars\* | Factory and Aerodynamic Bar  
\*Not suitable for bars with a depth exceeding 38 mm.

See the full range at [yakima.com.au](http://yakima.com.au) / [yakima.co.nz](http://yakima.co.nz)

MEET YAKIMA  
BIKE AMBASSADOR  
Sam Hill

Australian legend Sam Hill is a master of Downhill, collecting multiple world titles. These days he's summoned the magic for Enduro riding and bagging even more wins! What we love about Sam is family comes first, with three kids and an amazing wife. We're proud to have him in the Yakima family, flying the flag for us. Follow him on Instagram @samhill13







## KingJoe Pro™

### BOOT/HATCH BIKE RACK



The KingJoe Pro makes adding a boot/hatch style rack to your hatchback, minivan or SUV a breeze. The QuickTrigger II™ hub system makes installation fast and easy while our StableCradles II™ hold your bikes firmly in place while driving.

KINGJOE PRO 2 | 8002624  
KINGJOE PRO 3 | 8002625

Compatible Accessories:  
TubeTop | 8002531  
PlateMate | 8002700  
LightMate | 9802701



## SuperJoe 3™

### BOOT/HATCH BIKE RACK



The SuperJoe 3 is designed for value-conscious riders who still want bomber steel construction and anti-sway cradles for extra bike protection.

SUPERJOE 3 | 8002614

Compatible Accessories:  
TubeTop | 8002531  
PlateMate | 8002700  
LightMate | 9802701



## FullBack™

### PREMIUM BOOT/HATCH BIKE RACK



The FullBack securely holds your bike, is simple to use, stores easily, and is easy on the wallet. The construction is rugged, the modern design is as cool as your ride, a locking package and SKS lock included, and there's a built-in bottle opener.

FULLBACK | 8002633

Compatible Accessories:  
TubeTop | 8002531  
PlateMate | 8002700  
LightMate | 9802701



Interlocking hub.



SuperCush™ ZipStrip™ cradles.



Arms fold flat when not in use.



Full locking package included.



## HangOut™ 3

### BOOT/HATCH BIKE RACK



Super simple and built to last, the HangOut secures your bikes for a confident carry on just about any vehicle. Loading and unloading is a piece of cake, and when you aren't off adventuring, fold it flat for compact storage.

HANGOUT 3 | 8002638

Compatible Accessories:  
TubeTop | 8002531  
PlateMate | 8002700  
LightMate | 9802701







## SpareRide™

### PREMIUM SWING-AWAY HITCH RACK



SpareRide easily attaches to your rear-mounted spare and turns it into a bike rack. Durable, stable and secure, it installs easily without tools. SuperCush™ cradles securely hold and protect your bikes, a bottle opener opens bottles, and integrated SKS locks for added security.

SPARERIDE | 8002599

Compatible Accessories:  
TubeTop | 8002531  
PlateMate | 8002700  
LightMate | 9802701



SuperCush™ ZipStrip™ cradles for bike protection.



TireTred pads for stability.



Arms fold flat when not in use.



Universal mounting plates with extensions fit most lug patterns.

## BOOT/HATCH ACCESSORIES



### TubeTop™

Create a faux-top-tube so your bike mounts solidly to the rack.  
8002531



### PlateMate™

Hold your accessory number plate safely on the back of your bike rack.  
8002700



### LightMate™

Where a bike carrier hides both number plate and rear lights, LightMate has it covered.  
9802701



### Security Strap

Steel reinforced to secure almost any boot/hatch rack to your vehicle.  
8002623

## Yakima Rear Door and Spare Racks Compared

BIKE MOUNTS	FullBack	KingJoe Pro	SuperJoe 3	HangOut 3	SpareRide
BIKE CAPACITY	3	2 / 3	3	3	2
ANTI-SWAY CRADLES	✓	✓	✓	✓	✓
YAKIMA BOTTLE OPENER	✓	✓		✓	✓
PREMIUM VEHICLE PROTECTION	✓	✓	✓	✓	✓
FOLDING ARMS	✓	✓	✓	✓	✓
SUPERCUSH™ ZIPSTRIP™ CRADLES	✓				✓
SKS LOCKS INCLUDED	✓				✓
MAX. WEIGHT PER BIKE*	2 Bike - 16 kg 3 Bike - 14 kg	2 Bike - 20 kg 3 Bike - 14 kg	14 kg	14 kg	16 kg
MAX. TOTAL WEIGHT	2 Bike - 32 kg 3 Bike - 41 kg	40 kg	41 kg	41kg	32 kg
PRODUCT WEIGHT	10 kg	8 kg	6 kg	6 kg	10 kg

\* Combined weight of bikes should not exceed the rack's maximum total weight capacity. Please refer to website for full specifications.

See the full range at [yakima.com.au](http://yakima.com.au) / [yakima.co.nz](http://yakima.co.nz)







## BikerBar™

### UTE BED BIKE RACK



The no-fuss bike carrier for ute/truck beds. No tools needed, no drill holes necessary. Just rock solid dependability and security so you can spend your time riding instead of installing.

BIKERBAR | 8001141

Compatible Accessories:

Fork adapter 12x100 mm | 8002116

Fork adapter 15x110 mm | 8002113

Fork adapter 15x100 mm | 8002099



## GateKeeper™

### UTE TAILGATE BIKE PAD



A perfect companion for ute bed bike transport. The durable nylon exterior protects your bike from your ute's tailgate while the soft felt backing keeps your ute's paint protected. Integrated SitTight™ bike cradles add extra stability for your bikes and the HindSight™ cover opens up the view for your reverse camera.

GATEKEEPER | 8007410

Compatible Accessories:  
PlateMate | 8002700



SitTight™ cushioned cradles separate and stabilize bikes.



SitTight™ cushioned cradles hold bikes securely.



HindSight™ cover allows use of your reverse camera.



## BlockHead™

### UTE BED FORK STYLE BIKE MOUNT



Anywhere you can insert a couple bolts, you've got yourself a place to install this handy fork style bike mount. Locking BlockHead includes SKS lock core and two SKS keys for extra security.

BLOCKHEAD | 8001117

LOCKING BLOCKHEAD | 8001118



## BedHead™

### UTE BED FORK STYLE BIKE MOUNT



With the BedHead you can fork mount your bike to the inside lip of your ute/truck bed without any drilling. Locking BedHead comes with a locking skewer so you can leave your bike in your bed with confidence.

BEDHEAD | 8001132

LOCKING BEDHEAD | 8001133





**BOAT, SURF AND  
SUP SOLVED.**



**WATER MOUNTS**





## ShowDown™

### LOAD ASSIST KAYAK AND SUP MOUNT



This mount makes loading and unloading heavy boats and boards a breeze. It tilts down more than two feet from the roof rack, takes on up to 45% of the boat's weight, then helps gently raise it up to the top of the vehicle. Once loaded, it securely cradles your boat or boards for the ride. No tools necessary for install with the easy-to-use SpinVice clamp.

- 36 kg boat and board capacity easily handles your big kayak or a couple of SUPs
- Weighing only 9.5 kg, it doesn't eat up your roof's carrying capacity
- Lowers down a lengthy 66 cm from roof rack height
- Provides a generous 30–45% weight assistance (depending on boat width)
- Felt-covered cradles flex to conform to your hull for secure transport
- Folds down flat to reduce drag and wind noise when not in use
- All tie-down straps included so you're ready to load right out of the box

SHOWDOWN | 8004081

Compatible Accessories:  
Set of 2 SKS Locks | 8007202



Felt-covered cradles flex to conform to hull for secure transport.



Easily load and unload with the easy-to-use slide and tilt mechanism.



Universal mounting hardware fits most roof racks.



Includes Heavy-Duty Straps and Bow/Stern Tie-Downs.





## ShowBoat™ 66

### LOAD ASSIST ROLLERS



This ingenious load-assist roller slides out over the rear of the vehicle for easy access and vehicle protection while loading and unloading your boat.

- Padded to protect your kayak or canoe during loading and transport
- Works with a variety of kayak and canoe mounts
- Corrosion-resistant stainless steel and brass hardware

SHOWBOAT 66 | 8004068



## SweetRoll™

### ROOFTOP KAYAK SADDLE AND ROLLER MOUNT



Loading your boat has never been easier than this! Two front and two rear saddles with integrated rollers hold your boat in place. The spring-loaded base automatically adjusts to the boat when loading. Comes as a set of 4. Includes heavy duty straps and bow/stern tie-downs.

SWEETROLL | 8004074

Compatible Accessories:  
Set of 2 SKS Locks | 8007202



Built-in rollers help glide the boat into place.



Rubber saddles protect the hull of the boat.



Pivoting saddle conforms to the shape of the boat.



Add Felt Pads for more protection. (Sold separately 8004080)



## EvenKeel™

### ROOFTOP KAYAK SADDLES



Universal mounts fit nearly any crossbar right out of the box. And out of the box it comes with everything you need to haul your boat, including straps and bow/stern tie-downs.

EVENKEEL Set of 4 | 8004052







## JayLow™ J-CRADLE ROOFTOP KAYAK MOUNT



Versatile, adaptable, and super low-maintenance, the JayLow kayak mount provides maximum loading and minimal fuss. No tools necessary for install with the easy-to-use SpinVice clamp. Carry one kayak in cradle position, or two in stacker position. Includes heavy duty straps and bow/stern tie-downs.

JAYLOW | 8004073

Compatible Accessories:  
Set of 2 SKS Locks | 8007202



Integrated boat ramp for easy loading.



Easy-to-use lever makes adjusting the mount a breeze.



Folds down flat when not in use.



Carry 1 boat in cradle and 2 boats in stacker position.



## BigStack™ KAYAK STACKER



Go BigStack to go big! Mount up to 4 boats on your roof, or use the extra room for a multisport adventure. HullGuard padding keeps your boats safe.

BIGSTACK | 8004041

Compatible Accessories:  
Set of 2 SKS Locks | 8007202



## MEET YAKIMA WATER AMBASSADOR Barney Young

Barney Young is an extreme white water kayaker from the South Island of New Zealand who's been kayaking since he was 15 years old. The ability to explore epic, hard-to-reach places around the globe with his mates is his driving force.

Follow his adventures kayaking around the globe on Instagram  
[@barnyyoung](#)







Compare All Boat Products

CRADLES & STACKERS	JayLow	BigStack
IDEAL BOAT TYPE	Touring/Rec/ Whitewater	Touring/Rec/ Whitewater
MAX BOAT CAPACITY	2*	4
TOOL-FREE INSTALL	✓	✓
INCLUDES HEAVY-DUTY STRAPS AND TIE DOWNS	✓	✓
FULLY ASSEMBLED	✓	✓
FOLDS DOWN WHEN NOT IN USE	✓	✓
COMPATIBLE WITH SKS LOCKS	✓	✓
SKS LOCKS INCLUDED		
WEIGHT LIMIT	36 kg	Roof rack capacity
CROSSBAR COMPATIBILITY	●■●* ●■●*	●■●* ●■●*



SADDLE & ROLLER MOUNTS	ShowDown	SweetRoll	EvenKeel
IDEAL BOAT TYPE	Touring/Rec/ Fishing	Touring/Rec/ Fishing	Canoe
MAX BOAT CAPACITY	1/2 SUPs	1	1
INCLUDES HEAVY-DUTY STRAPS AND TIE DOWNS	✓	✓	✓
TOOL-FREE INSTALL	✓	✓	✓
FULLY ASSEMBLED	✓	✓	✓
COMPATIBLE WITH SKS LOCKS	✓	✓	✓
SKS LOCKS INCLUDED			
WEIGHT LIMIT	36 kg	36 kg	36 kg
CROSSBAR COMPATIBILITY	●■●* ●■●*	●■●* ●■●*	●■●* ●■●*

●■● RoundBar | Square Bars\* | Factory and Aerodynamic Bar

\* Not suitable for bars with a depth exceeding 38mm

\* Additional bow/stern tie downs needed to carry multiple boats



SupDawg™

PREMIUM ROOFTOP SUP AND SURFBOARD MOUNT

A stand-up paddle board mount that can hold up to two SUP Boards up to 91 cm wide. The SUPDawg is fully assembled out-of-the-box, features integrated rollers for easy loading, and includes SKS locks.

SUPDAWG | 8004075



Keeps your boards safe and sound with nylon-coated steel cables.



Locking, integrated strap storage keeps strap from flapping in the wind.



Easily install with locking SpinVice clamp.



Integrated rollers for easy loading.





# Aero Crossbar Pads

## ROOF RACK, BOARD AND GEAR PROTECTION

Our anti-slip bar pads confidently carry SUPs, surfboards, or kayaks. Two sizes - there's a perfect fit for just about any type of bar, including the LockNLoad Platform - and two widths let you choose the pad that fits your gear.

50 cm | 8007412  
76 cm | 8007413



## BOAT, SUP AND SURF ACCESSORIES



### RipCord

Locking 3.6 m tie-down straps to secure your boat or boards.  
8004048



### SoftStrap

Tough tie downs with integrated cover to stash excess strap (pair).  
2.4 m | 8007420  
4.9 m | 8007419



### Hood Anchor

Creates a secure attachment point for bow and stern tie downs.  
8007416



### Heavy Duty Straps

Super strong box-stitched 4.9m straps with soft, rubber-coated buckles  
8005006



### Bow/Stern Tie Downs

Secures the bow and stern of any boat with easy-to-use ratchet pulley.  
8004031



### AceO'Spades

Secure oars/paddles to your rack and free up space. Includes SKS locks.  
8000335



### Anchor Straps

Creates up to two mounting points for bow/stern tie-downs on vehicles.  
8004046



### SKS Locks

Additional lock cores to secure more gear.  
Set of 2 8007202  
Set of 4 8007204  
Set of 6 8007206  
Set of 8 8007208



# ReelDeal™

## ROOFTOP FISHING ROD MOUNT



A simple, compact, and economical way to securely transport fully rigged-up fishing rods of most styles on a roof rack.

- Transports up to 8 fully rigged-rods
- Built-in padding secures and protects rods
- Lockable, single-button opening provides convenient side access for loading

REELDEAL | 8004089



Tool-free universal roof rack attachment.



Locks rods to mount with 2 included SKS Locks.



Carry up to 8 rods with reels and lines strung.



Side opening provides easy access to load and unload rods.





**FIRST TRACKS  
ARE ALL YOURS**



SKI & SNOWBOARD MOUNTS





## FatCat EVO™

### PREMIUM SKI & SNOWBOARD MOUNT



Our most aerodynamic and premium-styled snowsport mount. A wider base allows for fat skis and snowboards. Available in black and silver. Optional super-low-profile T-slot hardware accessory sold separately

FATCAT EVO 4 - 4 pairs of skis or 2 snowboards | 8003095  
FATCAT EVO 6 - 6 pairs of skis or 4 snowboards | 8003096



**SmarT-Slot Kit 2**  
Low-profile conversion kit lets you mount your FatCat EVO to T-slotted crossbars. 8003098



## FreshTrack™

### SKI & SNOWBOARD MOUNT



A quick getaway is made easy with FreshTrack carrying skis or snowboards. Designed for skis up to 120 mm wide at the tip, the tool-free clamp design makes installation and removal a breeze. One-button access allows gloves-on operation, and the built-in SKS locks secure your gear.

FRESHTRACK 4 - 4 pairs of skis or 2 snowboards | 8003092  
FRESHTRACK 6 - 6 pairs of skis or 4 snowboards | 8003093



Tool-free clamp design makes install and removal a breeze.



Includes SkiLift attachment to provide clearance for tall bindings.



Integrated SKS (Same Key System) locks included for added security.



## Yakima Ski & Snowboard Mounts Compared

SNOW MOUNTS	FatCat 4 EVO	FatCat 6 EVO	FreshTrack 4	FreshTrack 6
SKI CAPACITY	4	6	4	6
SNOWBOARD CAPACITY	2	4	2	4
INTERNAL USABLE SPACE	54 cm	82 cm	49 cm	75 cm
UNIVERSAL RACK FIT	✓	✓	✓	✓
INTEGRATED SKS LOCKS	✓	✓	✓	✓
BUILT-IN SKI LIFT FOR TALL BINDINGS	✓	✓	✓	✓
TOOL-FREE INSTALL	✓	✓	✓	✓
CROSSBAR COMPATIBILITY	● ■ ●	● ■ ●	● ■ ●	● ■ ●

● ■ ● Round Bar | Square Bar | Factory and Aerodynamic Bar





**LOAD UP N' GO,  
ANYWHERE, ANYTIME.**



**CARGO BOXES & TRAYS**





# OffGrid™

## PREMIUM CARGO BASKET

The OffGrid delivers proven Yakima performance with all-new features and an advanced aerodynamic design. Universal mounting hardware works with most roof bars and makes installation a breeze. Add some gear mounts and carry bikes, boats, skis, and more. This premium cargo basket works hard, handles years of rugged adventure, and looks awesome on your roof.

OFFGRID medium - 112 x 102 x 18 cm | 8007138  
OFFGRID large - 135 x 125 x 18 cm | 8007139



Weather-resistant, heavy-duty steel construction.



Fully adjustable accessory bars help secure loads.



Included fairing reduces drag and wind noise.

### OFFGRID ACCESSORIES



#### Extensions

Load more gear with 40% more space in your OffGrid.  
Medium 46 x 102 x 18 cm | 8007108  
Large 56 x 125 x 18 cm | 8007109



#### AceO'Spades

Secure shovels/paddles to your OffGrid - requires adapter.  
AceO'Spades | 8000335  
OffGrid Adapter | 8880934



#### Cargo Nets

Keep loose gear safe and secure inside the OffGrid.  
Medium | 8007072  
Large | 8007081



#### SKS Locks

Security simplified. One key locks rack to vehicle and locks gear to rack.  
Set of 2 8007202 | Set of 4 8007204  
Set of 6 8007206 | Set of 8 8007208



#### Smart-Slot Kit 3

Low-profile conversion kit to mount OffGrid into crossbars' T-slot.  
8007356



#### Accessory Bar

Creates extra attachment point for gear mounts or a load stop.  
Medium | 8007353  
Large | 8007354







# MegaWarrior™

## CARGO BASKET

If you've got an XL car, XL friends or both, the MegaWarrior will round out your large lifestyle. Beefy construction, wide body fits any gear you can huck into it. The only thing that isn't beastly about this cargo basket is the installation. Quick and easy, install is a snap and fits virtually any crossbar.

MEGAWARRIOR - 132 x 122 x 17 cm | 8007080



# LoadWarrior™

## CARGO BASKET

No matter what gear your friends show up at your driveway with, you'll be ready with the LoadWarrior cargo basket. From bikes, skis and boats to luggage, double basses and furniture, you're ready to load up. Installation is quick and easy and universal mounts fit virtually any crossbar.

LOADWARRIOR - 112 x 99 x 17 cm | 8007070



# SkinnyWarrior™

## CARGO BASKET

The latest addition to our popular Warrior Cargo Basket collection takes up less roof space - giving you more room to add bikes, boats, boards, or even a SkyRise™ rooftop tent. A true Yakima Warrior, the new SkinnyWarrior is built from rugged, weather-resistant steel.

SKINNYWARRIOR - 147 x 58 x 17 cm | 8007014



### WARRIOR ACCESSORIES



**MegaWarrior Extension**  
Expand your MegaWarrior's cargo capacity by 40%.  
56 x 122 x 17 cm.  
8007082



**LoadWarrior Extension**  
Expand your LoadWarrior's cargo capacity by 40%.  
46 x 99 x 17 cm.  
8007070



**Axe/Shovel Bracket**  
Secures a single axe or shovel to a Warrior cargo basket.  
8007078



**Light Mounting Brackets**  
Heavy-duty steel bracket accommodates lights of virtually any shape or size.  
Set of 2 | 8007075



**Spare Tyre Carrier**  
Mount bulky spares up to your basket and make more room inside your vehicle.  
8007076



**Hi-Lift Jack Bracket**  
Keep your dirty Hi-Lift Jack away from all your gear.  
8007077



**Cargo Net**  
Keep loose gear safe and secure inside the cargo basket.  
LOADWARRIOR | 8007072  
MEGAWARRIOR | 8007081



**Locking Brackets**  
Securely lock your basket to your crossbars.  
Set of 2 | 8007064

## Yakima Cargo Baskets Compared

BIKE MOUNTS	OffGrid	SkinnyWarrior	LoadWarrior	MegaWarrior
UNIVERSAL RACK FIT	✓	✓	✓	✓
CUSTOM WIND FAIRING	✓	✓	✓	✓
STEEL CONSTRUCTION	✓	✓	✓	✓
MOVEABLE ACCESSORY BAR	✓			✓







**SkyBox Carbonite**  
Mighty, all-purpose storage.  
SKYBOX 12, 340 L | 8007334  
SKYBOX 16, 450 L | 8007335  
SKYBOX 18, 510 L | 8007336  
SKYBOX 21, 595 L | 8007337



**SkyBox Lo Carbonite**  
Low profile.  
SKYBOX LO, 425 L | 8007338

## SkyBox™ Carbonite

**AERODYNAMIC CARGO BOX**

Combining aerodynamic performance and roadproven durability, the best-selling SkyBox is the perfect choice for families and roadtripping adventurers. Universal mounting system works with most roof bars and five sizes mean there's definitely one that fits your needs.



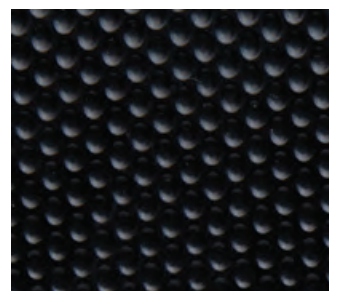
SuperLatch™ security with SKS locks ensures your box is secure.



Easy to mount and remove - no tools or assembly required.



Dual-sided opening for easy access on either side of your vehicle.



Aerodynamic, textured carbonite lid reduces drag and wind noise.





# Yakima Cargo Boxes Compared

CARGO BOXES		SkyBox 21	SkyBox 18	SkyBox 16	SkyBox 12	SkyBox Lo	RocketBox 14	RocketBox 12
DIMENSIONS	LENGTH	234 cm	234 cm	206 cm	234 cm	234 cm	188 cm	147 cm
	WIDTH	91 cm	91 cm	91 cm	61 cm	91 cm	88 cm	91 cm
	HEIGHT	46 cm	41 cm	38 cm	41 cm	30 cm	41 cm	41 cm
VOLUME		595 L	510 L	450 L	340 L	425 L	396 L	340 L
MAX. LOAD RATING		75 kg	75 kg	75 kg	75 kg	75 kg	75 kg	75 kg
BOX WEIGHT		28 kg	24 kg	21 kg	19 kg	24kg	17 kg	14 kg
DUAL SIDED OPENING		✓	✓	✓	✓	✓	✓	✓
INTEGRATED SKS LOCKS		✓	✓	✓	✓	✓	✓	✓
PREMIUM METAL HANDLE		✓	✓	✓	✓	✓		
DURABLE, EXTRA-STIFF LID		✓	✓	✓	✓	✓		
LOAD CAPACITY - SKIS - SNOWBOARDS		4-6 2	4-6 2	6-8 2-3	6-8 2-3	4-6 2	4-6 2	N/A
MAX. LENGTH GEAR/SKIS		215 cm	215 cm	185 cm	215 cm	215 cm	170 cm	N/A
CROSSBAR COMPATIBILITY*		●■—	●■—	●■—	●■—	●■—	●■—	●■—



## RocketBox Pro™ VERSATILE CARGO BOX

The RocketBox series offers two options that are versatile yet budget-friendly. Go long-and-lean for skis and boards, or wide-and-stout for gear on the go.

ROCKETBOX PRO 12, 340 L | 8007191  
ROCKETBOX PRO 14, 396 L | 8007192



RocketBox Pro 12



Simple push-button access.



Dual-sided opening for easy access on either side of your vehicle.



RocketBox Pro 14

# Ski & Snowbard Length Comparison







BASE CAMP

**HOME IS WHERE  
YOU PARK IT**







## SkyRise™ HD

### HEAVY DUTY ALL-SEASON ROOFTOP TENT

Your hub for the ultimate mobile base camp in any season. The extra-large windows and doors provide grand views and great ventilation, while the thick wall-to-wall foam sleeping pad provides cushy, all-night comfort.

- Provides room for up to three campers
- Frame geometry offers more usable space
- Large doors, windows and skylights open up the vistas
- 4-season weather protection: 600 D Ripstop Polyester fabric with a 3000 mm waterproof PU coating
- Rainfly with 210 D Ripstop Polyester, 3000 mm PU waterproof coating
- Guy lines and D-rings on the tent floor to hang gear or tie down the tent in windy conditions
- Abrasion-resistant tent floor with textured finish for added durability
- Ladder has mid-height adjustment points for easy set-up
- Ladder auto-close function that makes it a snap to close up
- Tool-free and lockable vehicle mounts - easy to put on, quick to take off
- Easy-to-deploy design means less work and more play
- 64 mm thick foam mattress
- Foam sleeping pad has removable cover for easy cleaning
- Mesh panel improves ventilation and view
- Aluminium tent frame is light, strong and pre-set to make pitching a breeze

SKYRISE HD | 8007437



#### SKYRISE HD

CAPACITY	3
LOAD CAPACITY	270 kg
PRODUCT WEIGHT	54 kg
DIMENSIONS PITCHED	L 243 cm x W 142 cm x H 122 cm
DIMENSIONS COLLAPSED	L 122 cm x W 142 cm x H 41 cm
SECURITY	Includes 2 SKS locks

#### SKYRISE™ HD ACCESSORIES



##### SkyRise Annex MD

Easily slides into the SideTrack™ and hangs below your SkyRise tent to provide additional living space at your camp.

8007422



##### SideKick

Keeps muddy, stinky footwear hanging outside your SkyRise tent, but within reach for a quick grab-and-go.

8007423



##### SkyLoft

Hanging storage net for the SkyRise tent helps keep your camping gear organised and easy to find.

8007424



##### SkyHooks

Pack of 4, simple to mount carabiners slide into the SideTrack™ to keep your gear in reach and off the ground.

8007425



##### SunBelt

Flexible LED light strip for your SkyRise tent provides illumination inside the tent or around your campsite.

8007426



##### SkyRise Bedsheets MD, Grey

Full sheet set specifically tailored to fit the Medium SkyRise rooftop tent mattress.

8007428







Yakima Australia Pty Ltd  
17 Hinkler Court  
Brendale, QLD 4500

AU: 1800 143 548 | [info@yakima.com.au](mailto:info@yakima.com.au) | [yakima.com.au](http://yakima.com.au)  
NZ: 0800 477 672 | [info@yakima.co.nz](mailto:info@yakima.co.nz) | [yakima.co.nz](http://yakima.co.nz)

Yakima is a registered trademark of the Yakima Group of companies.

© Yakima Australia Pty Ltd 2020. We (Yakima Australia Pty Ltd) own or licence the intellectual property rights in the trademarks featured in this publication (whether registered or unregistered) including without limitation: Yakima®, Hubco®, Whispbar®, QuickDock™, S-Wing®, SmartFoot™, SmartFill™, T-slot, the wing device, and the Whispbar shape. Products described in this publication may also be the subject of patent, design or copyright protection. All rights reserved.

2020 Edition.

**YAKIMA®**  
**TAKE IT EASY.**



[Yakima.com.au](http://Yakima.com.au) | [Yakima.co.nz](http://Yakima.co.nz)

