

MAXIMUM PRODUCT LOAD RATING:



- **2 MOUNTS (9831032): 50 kg**
- **4 MOUNTS (9831034): 100 kg**

IMPORTANT:

- **LOAD = WEIGHT OF PLATFORM or BARS + MOUNTING SYSTEM + ACCESSORIES + CARGO**
- **PLEASE REFER TO VEHICLE MANUFACTURER SPECIFICATIONS FOR MAX ROOF LOAD CAPACITY OF VEHICLE. THE LOWEST LOAD RATING APPLIES.**
- **FOR CANOPY INSTALLATIONS SEEK LOAD CAPACITY OF CANOPY FROM THE MANUFACTURER. ONCE AGAIN, THE LOWEST LOAD RATING APPLIES.**
- **OFFROAD RATING: SCAN QR CODE FOR LOCKNLOAD LOAD RATING GUIDE. REDUCTIONS MAY APPLY.**



FIRST TIME INSTALLATION

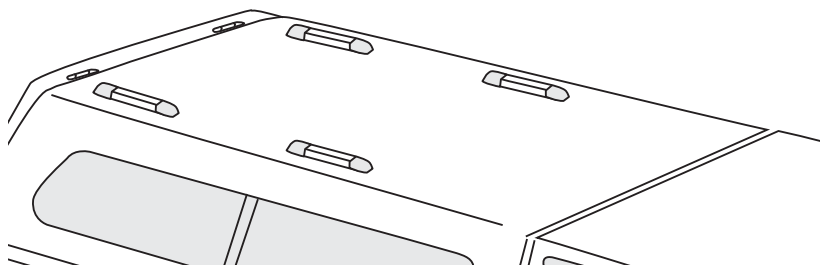
- Please read instructions carefully before installation.
- Check the contents of kit. Contact your YAKIMA dealer if any parts appear missing or damaged.
- Clean your roof thoroughly prior to fitting the LockNLoad Permanent Mount System.
- Place these instructions in the vehicle's glove box after installation is complete.



TOOLS REQUIRED:

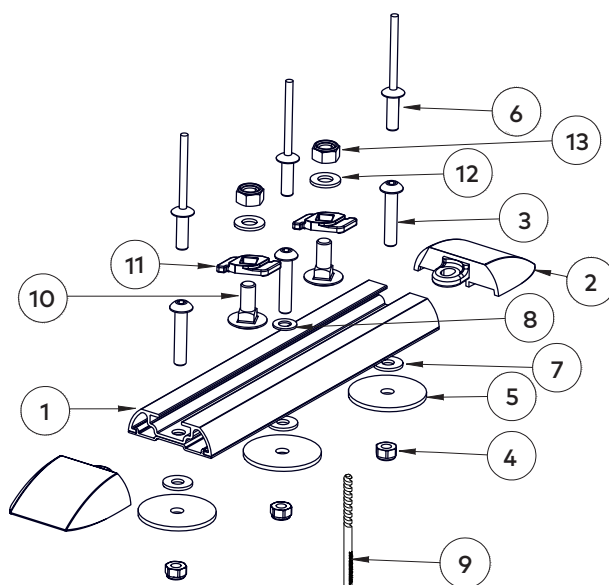
- 3 mm Drill Bit
- 6 mm Drill Bit
- Vacuum Cleaner
- Small paint brush
- 3 mm Allen Key
- Power or Cordless Drill
- Mastic Silicone Sealant
- Marking Pen
- Tape Measure
- Rivet Gun
- Wrench
- Drill stop

For installation on Canopy see pages 2-4
For installation on Steel Roof see pages 5-7



KIT CONTENTS

ITEM	COMPONENT	2 MOUNT KIT (9831032)	4 MOUNT KIT (9831034)
1.	Permanent Mount Block	x2	x4
2.	Permanent Mount End Cap	x4	x8
3.	Capscrew Button Head M5 X 25 mm	x6	x12
4.	Nut Nyloc M5	x6	x12
5.	Washer M5 Black Large	x6	x12
6.	Rivet Ø4.8 X 13.5 mm	x6	x12
7.	Washer Nylon White	x6	x12
8.	Washer Nylon Black Small	x2	x4
9.	Drill Bit 4.9 mm	x1	x1
10.	Coach Bolt M6 x 25	x4	x8
11.	Coach Bolt Housing	x4	x8
12.	Washer M6	x4	x8
13.	Nyloc Nut M6	x4	x8



Due to manufacturing variances, canopy thickness can differ considerably. For canopy installs you may need to obtain longer capscrews from your local fasteners store.



Do not use countersunk screws as an alternative fixing method to the rivets supplied with this kit.

CANOPY INSTALLATION



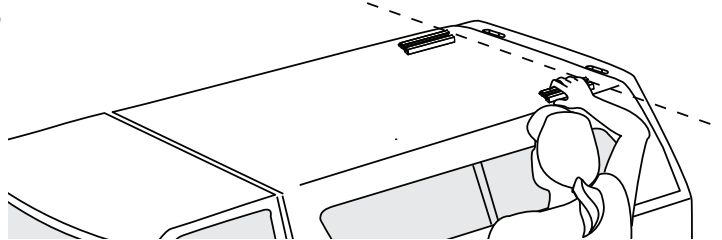
CAUTION - Before drilling into canopy ensure that there is nothing under the canopy that can be damaged. Inspect for wiring harnesses, airbags and other obstacles that drilling could damage.

The use of a drill stop is recommended to ensure this does not happen.

1

PERMANENT MOUNT POSITIONING

Align Permanent Mount Blocks parallel to each other and position Permanent Mount ends at an equal distance from rear of canopy.



After positioning Permanent Mount Blocks, check underside of canopy for any possible obstructions such as support ribs or panel joints that may interfere with hardware at any of the hole locations. (Capscrew lengths are 25 mm.) You may have to adjust your Permanent Mount position to avoid all obstructions. **Ensure Permanent Mount Blocks are kept parallel.**

NOTE - Two magnets (one on the topside, and one on the underside) can be helpful for pin pointing hole locations inside the shell. Use caution with magnets to avoid damaging the canopy finish.

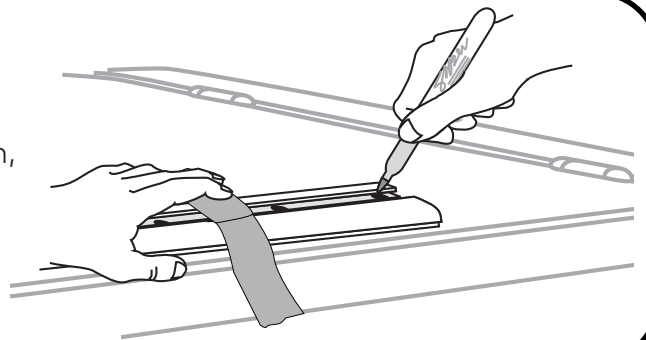
2

MARK DRILL HOLES

Use masking tape to hold the Permanent Mount Block in place. Using a marking pen, outline the three holes to be drilled.



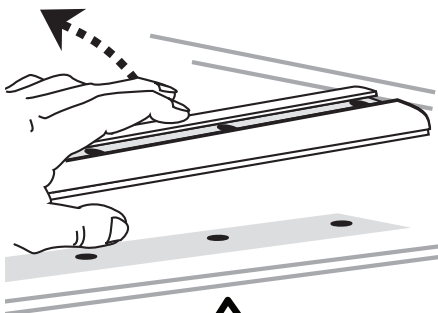
CAUTION - Permanent Mount Base can slide. Ensure it is aligned to the Permanent Mount Block.



3

REMOVE PERMANENT MOUNT

Remove Permanent Mount Block from canopy.

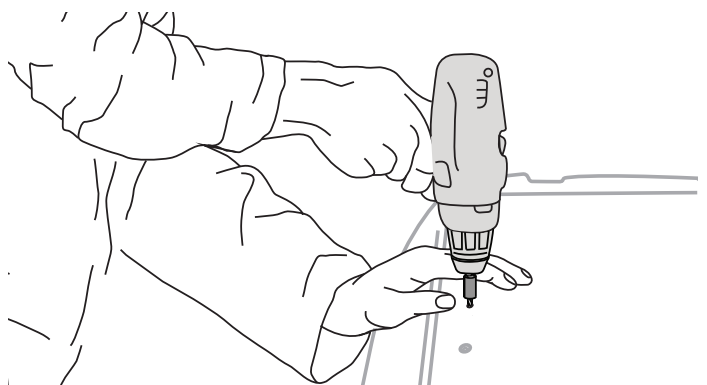


Never drill through Permanent Mount.

4

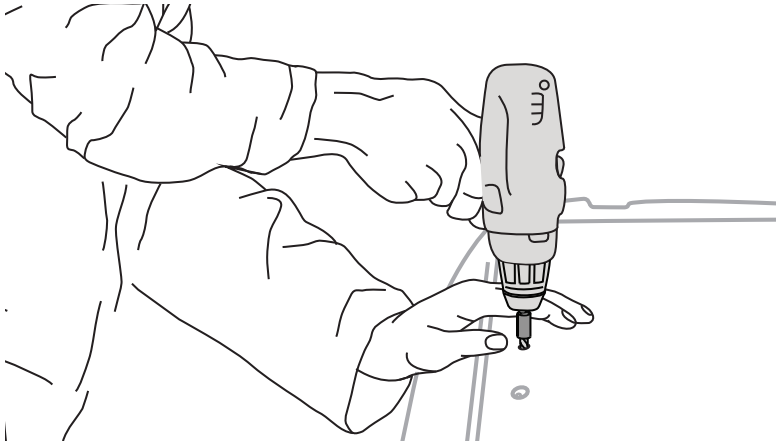
DRILL PILOT HOLES

Using a 3 mm Drill Bit, carefully drill pilot holes in center of marks. Ensure a drilling angle perpendicular to the canopy surface is maintained throughout.

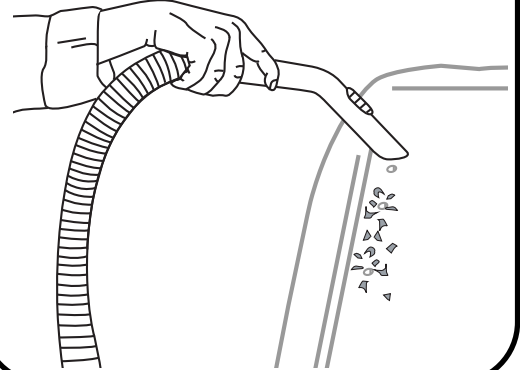


5**COMPLETE DRILLING**

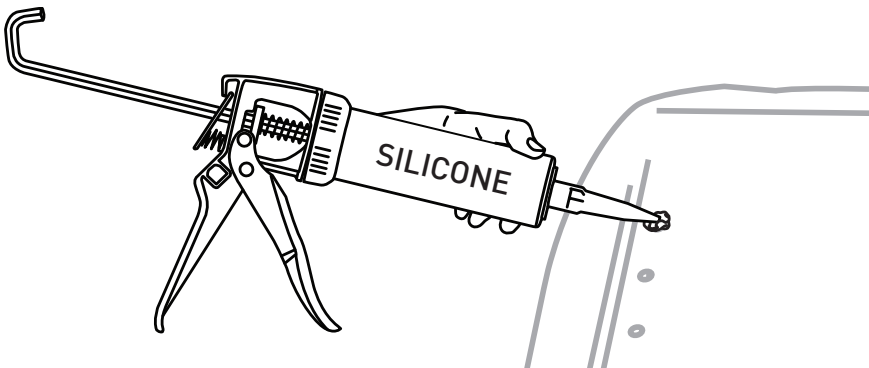
Using a 6 mm Drill Bit, carefully drill into pilot holes. Ensure a drilling angle perpendicular to the canopy surface is maintained throughout.

**6****REMOVE SWARF**

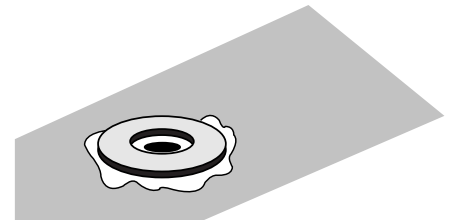
Using a vacuum cleaner carefully remove swarf from canopy, taking care not to scratch the vehicle.

**7****APPLY SILICONE SEALANT**

Protect roof channel by applying a Mastic Silicone Sealant to the inside surface and surrounds of each drilled hole.

**8****PLACE WHITE WASHERS**

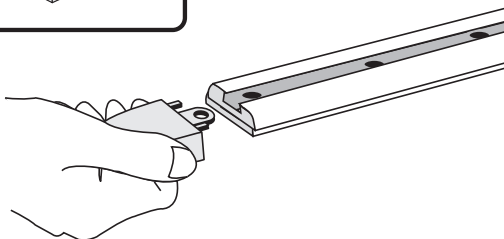
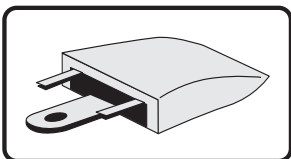
Place a White Nylon Washer onto each hole to which silicone has been applied.



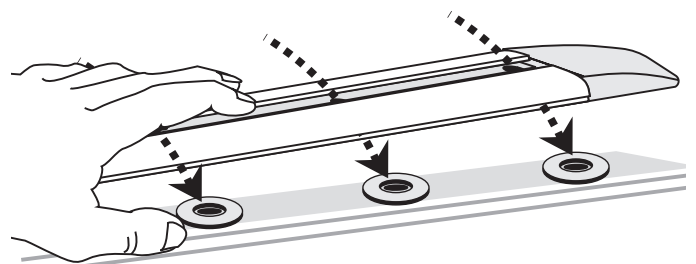
NOTE - Washer should be flat against drilled hole.

9**END CAP FITMENT**

Align End Caps and slide into position on all Permanent Mount ends.

**10****PLACE PERMANENT MOUNT**

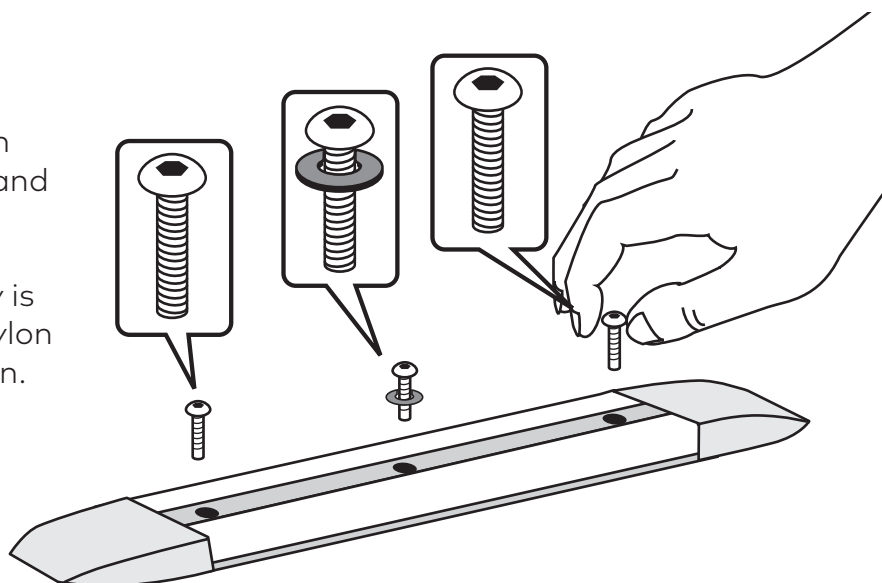
Place Permanent Mount Block back onto canopy, ensure to align Permanent Mount holes to holes in Permanent Mount Base and in canopy.



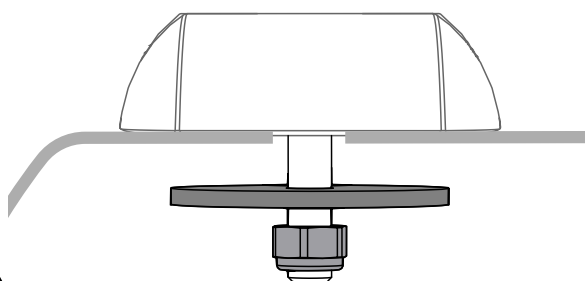
11**PERMANENT MOUNT POSITIONING**

Install Capscrews through Permanent Mount Block and canopy.

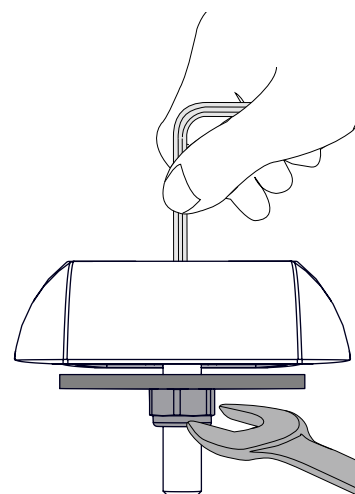
The centre Capscrew only is to have 1 x Small Black Nylon Washer installed as shown.

**12****ATTACH REMAINING HARDWARE**

From inside your canopy, attach 1 x Large Black Washer and 1 x Nyloc Nut onto each Capscrew in the order shown.

**13****SECURE PERMANENT MOUNT**

With assistance from a friend, tighten the Capscrews through the Permanent Mount from above using a 3 mm Allen Key to 4 Nm and inside the canopy using a wrench.



STEEL ROOF INSTALLATION



CAUTION - Before drilling into roof ensure that there is nothing under the roof that can be damaged. Inspect for wiring harnesses, airbags and other obstacles that drilling could damage.

The use of a drill stop is recommended to ensure this does not happen.

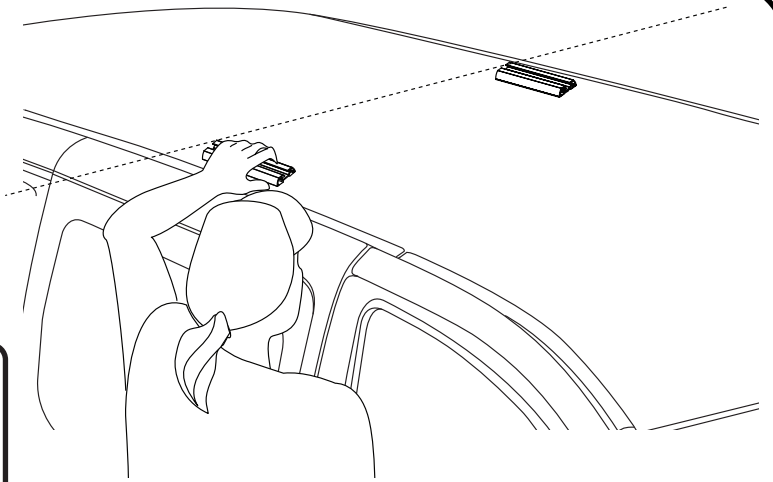
1

PERMANENT MOUNT POSITIONING

Align Permanent Mount Blocks parallel to each other and position at an equal distance on desired roof location.



Check there is no interference between what you intend to carry with aerials, sunroof or tailgate. **Ensure Permanent Mount Blocks are kept parallel.**



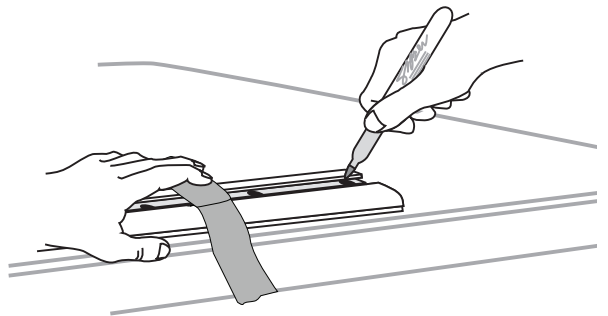
2

MARK DRILL HOLES

Use masking tape to hold the Permanent Mount Block in place. Using a marking pen, outline the three holes to be drilled.



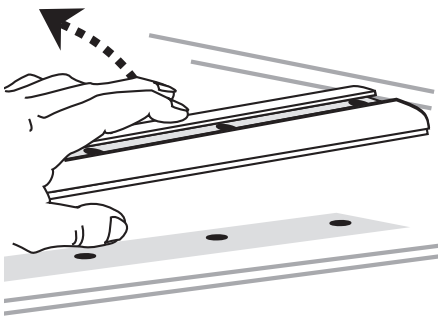
CAUTION - Permanent Mount Base can slide. Ensure it is aligned to the Permanent Mount.



3

REMOVE PERMANENT MOUNT

Remove Permanent Mount from roof.

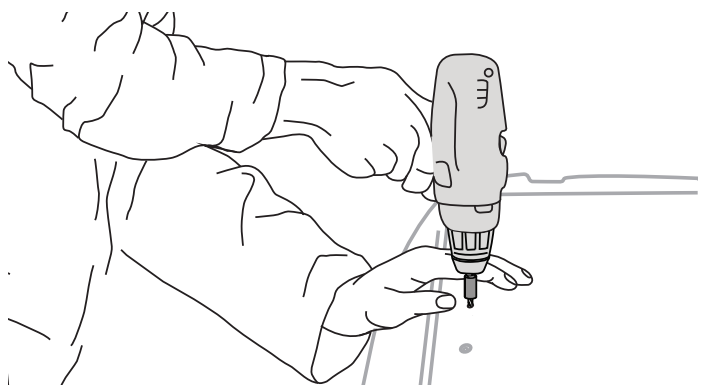


Never drill through Permanent Mount.

4

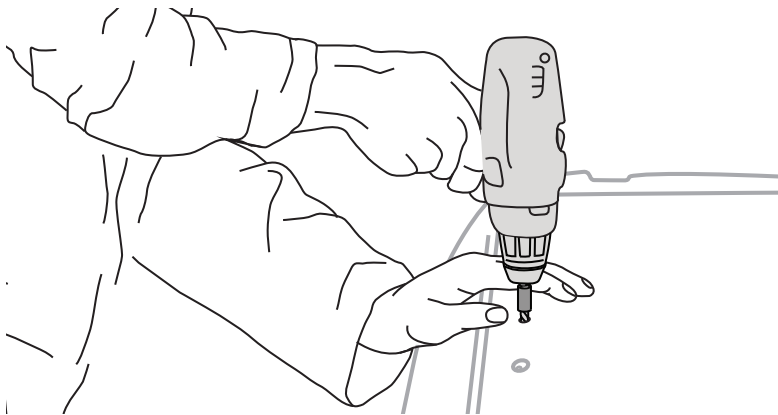
DRILL PILOT HOLES

Using a 3 mm Drill Bit, carefully drill pilot holes in center of marks. Ensure a drilling angle perpendicular to the roof surface is maintained throughout.

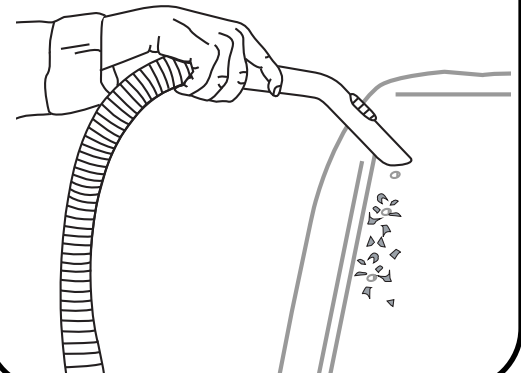


5**COMPLETE DRILLING**

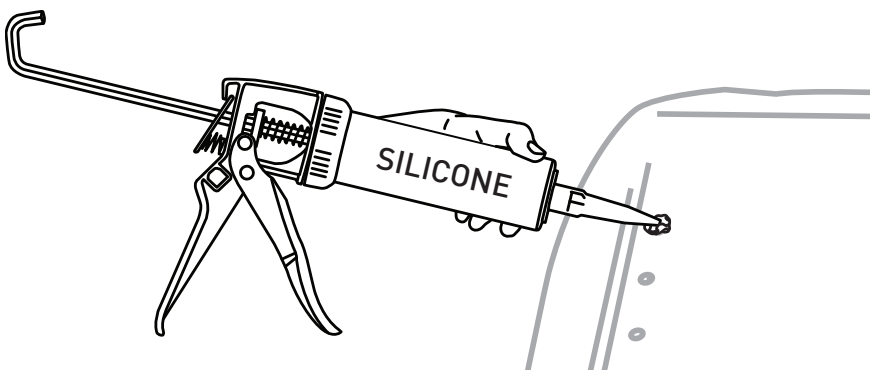
Using the supplied 4.9 mm Drill Bit, carefully drill into pilot holes. Ensure a drilling angle perpendicular to the roof surface is maintained throughout.

**6****REMOVE SWarf**

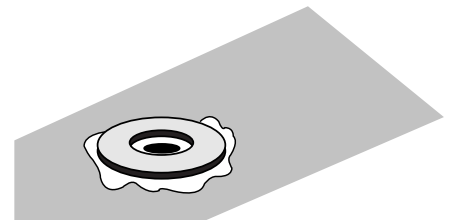
Using a vacuum cleaner carefully remove swarf from roof, taking care not to scratch the vehicle.

**7****APPLY SILICONE SEALANT**

Protect roof channel by applying a Mastic Silicone Sealant to the inside surface and surrounds of each drilled hole.

**8****PLACE WHITE WASHERS**

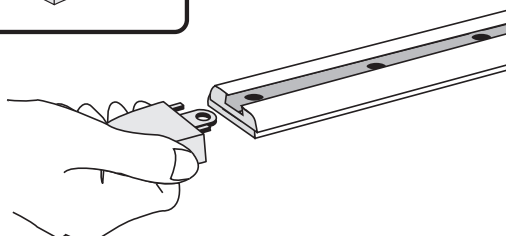
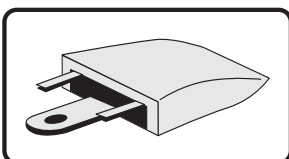
Place a White Nylon Washer onto each hole to which silicone has been applied.



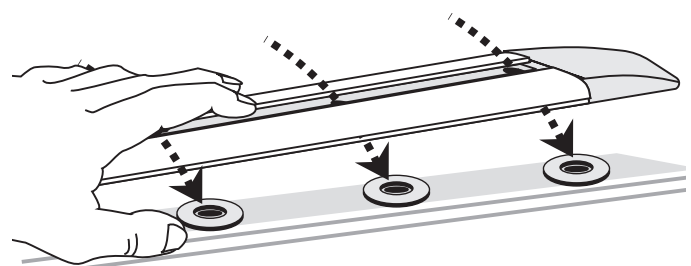
NOTE - Washer should be flat against drilled hole.

9**END CAP FITMENT**

Align End Caps and slide into position on all Permanent Mount ends.

**10****PLACE PERMANENT MOUNT**

Place Permanent Mount Block back onto roof, ensure to align Permanent Mount holes to holes in Permanent Mount Base and in roof.



11**POSITION RIVETS**

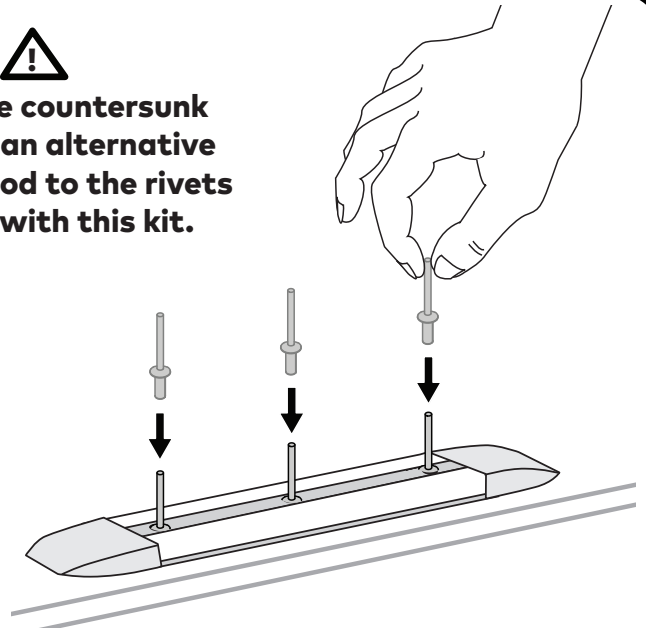
Insert rivets through drilled holes in Permanent Mount blocks.



Do not use countersunk screws as an alternative fixing method to the rivets supplied with this kit.

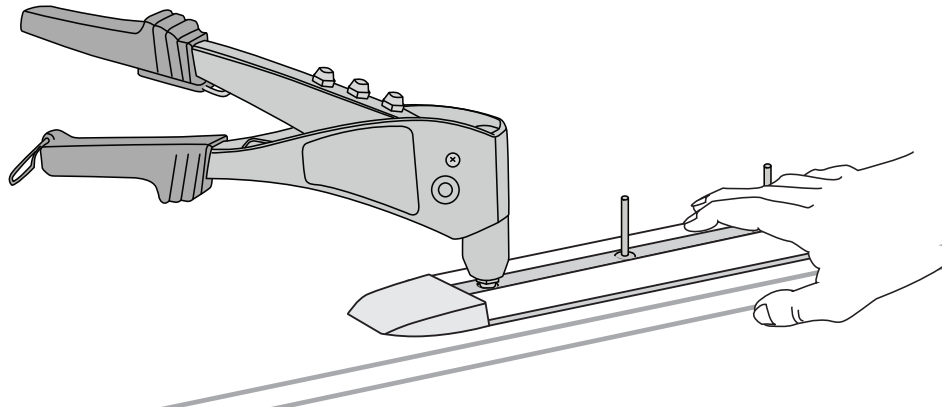


The rivets supplied are suitable for installations up to 3 mm steel thickness. If the sheet thickness is greater than this contact Yakima or your retailer for P/N 9891046 Rivet Kit.

**12****INSTALL RIVETS**

While holding the permanent mount block firmly on roof, rivet the blocks to the roof.

Repeat until all the rivets have been installed.



LOCKNLOAD LEG INSTALLATION

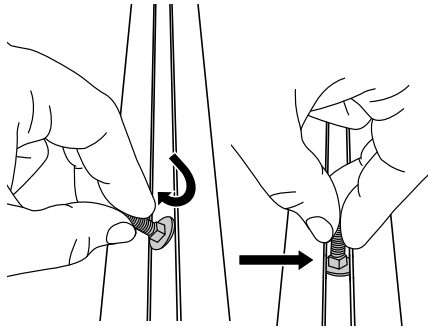
1

ASSEMBLE BOLT HOUSING

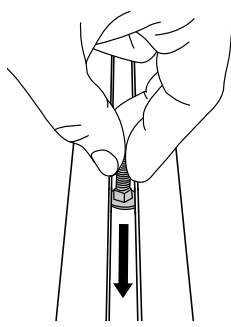
Insert 2 x M6 Coach Bolts into each track on either side of the center mounting screw or rivet. Then slide a Coach Bolt Housing onto each screw and into the track. Rotate to secure into place.



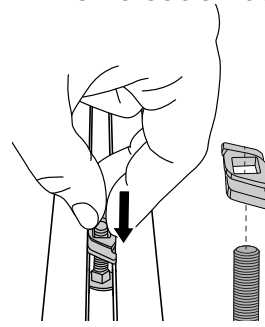
Ensure legs are secured with two coach bolt assemblies



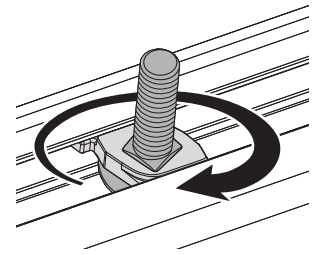
Insert Bolt by angling in and straightening



Slide bolt along inside of Track into position



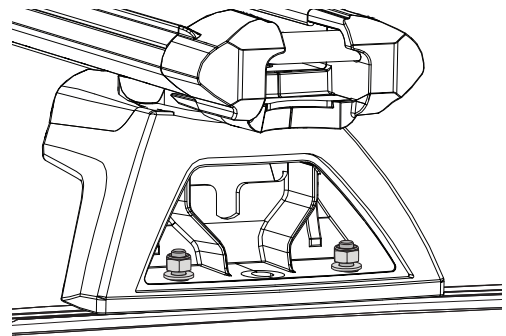
Place bolt housing over bolt, ensure correct orientation



Twist Bolt assembly clockwise to engage with the track

Now switch to your LockNLoad Platform or Bar instructions.

Select appropriate kit (part # 8880676-8880680) depending on height packer requirements.



YAKIMA

www.yakima.com.au

www.yakima.co.nz

www.yakima.com

www.yakima.eu

YAKIMA AUSTRALIA PTY LTD

17 Hinkler Court

Brendale, QLD 4500

Australia

1800 143 548

YAKIMA PRODUCTS, INC.

4101 Kruse Way

Lake Oswego, OR

97035-2541

USA

888 925 4621

ALL CONTENT SUBJECT TO YAKIMA AUSTRALIA PTY LTD COPYRIGHT © 2021