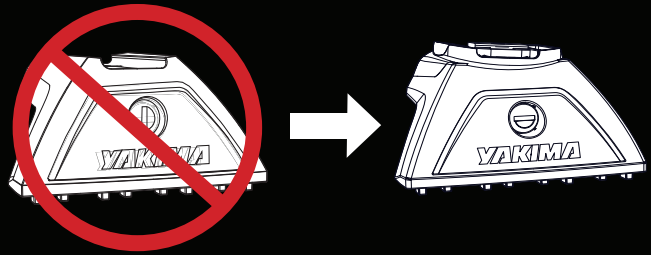


THESE INSTRUCTIONS SUPPLEMENT THE BAR/LEG INSTALLATION SECTIONS THAT MAY STILL FEATURE THE MK1 LEG IN YOUR VEHICLE FIXED OR TRACK MOUNT FITTING KIT INSTRUCTION



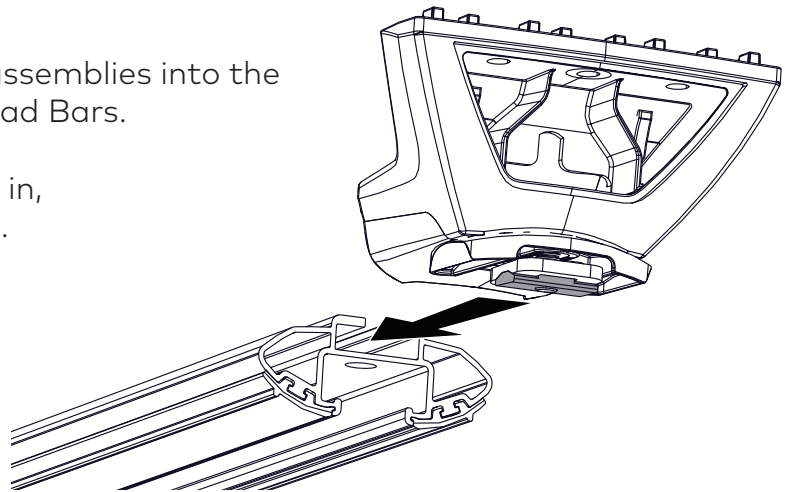
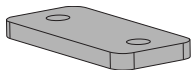
### BAR INSTALLATION

#### 1 INSERT LEGS

Slide the pre-assembled Leg assemblies into the underside channel of LockNLoad Bars.

If Leg assemblies will not slide in, loosen Screws to increase gap.

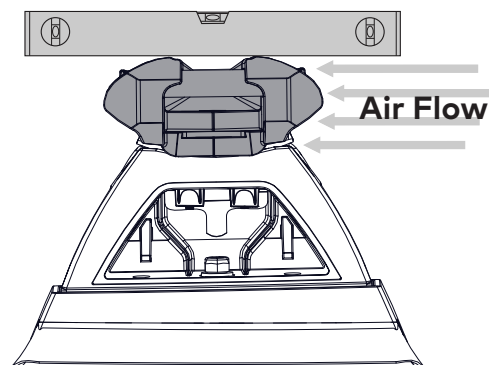
**Note: Nut Plates are not required.**



#### 2 LEVEL BARS - FIXED POINT

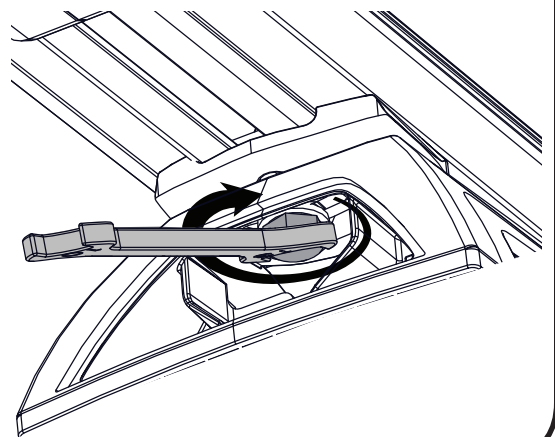
With vehicle on a level surface, adjust all Bar angles to be level using a Spirit Level.

The Bar angle can be adjusted to reduce any wind noise. In most cases this is achieved by getting the Bar in-line with air flow parallel to the ground.



#### 3 SECURE LEGS TO BARS

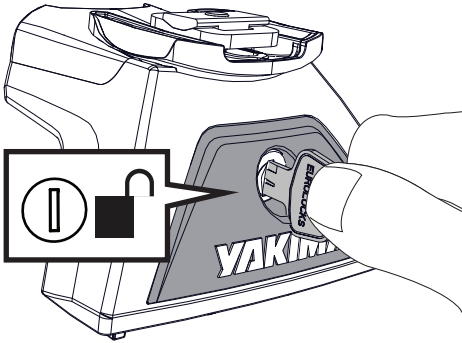
Tighten all M8 Set Screws to 9 Nm using a 13 mm Spanner.



# PLATFORM LEG MOUNTING INSTRUCTIONS

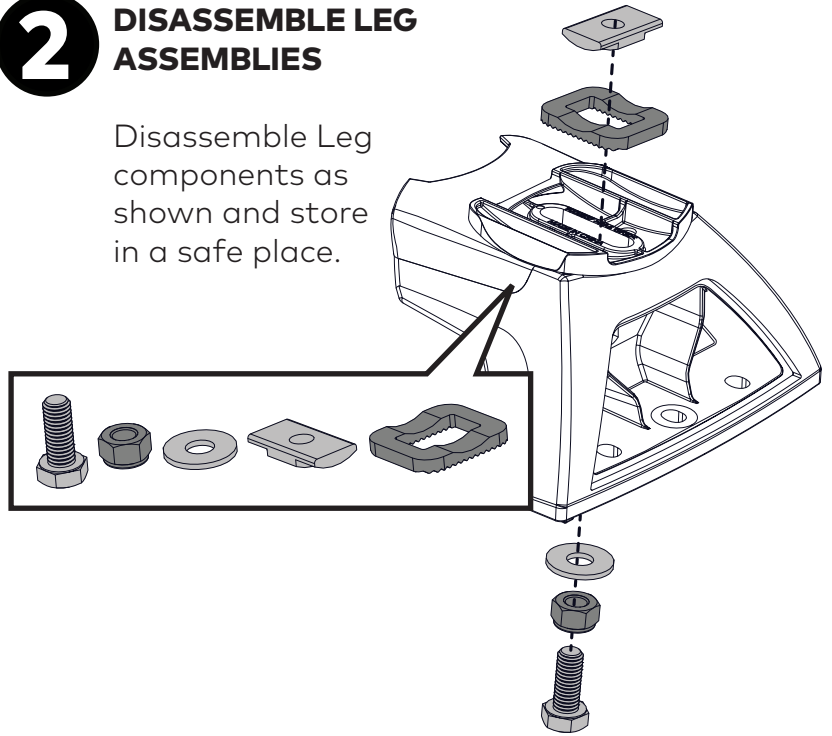
## 1 REMOVE LEG COVERS

Using the keys supplied in the LockNLoad Leg Kit (sold separately), remove all Leg Covers.



## 2 DISASSEMBLE LEG ASSEMBLIES

Disassemble Leg components as shown and store in a safe place.



## 3 ASSEMBLE LEGS

Assemble each Leg as shown using one Platform Mount Bracket, M8 Coach Bolt and M8 Nut from the LockNLoad Leg Kit.

All Brackets should be parallel with the base of the Leg prior to tightening.

Tighten all M8 nuts to 9 Nm using a 13 mm Spanner.

